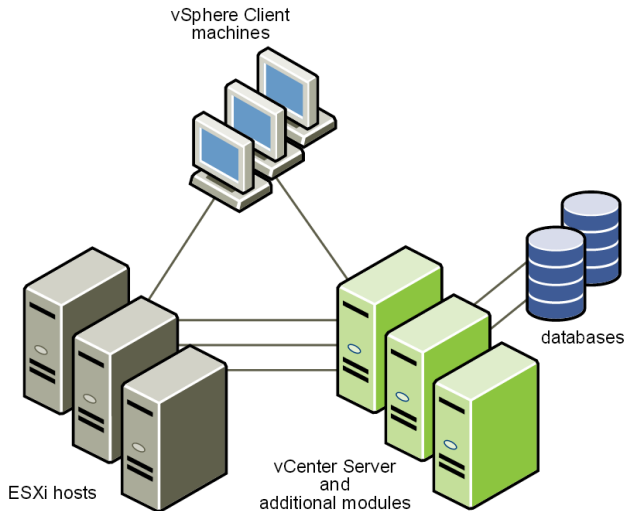


Practical No.4

Aim :- Manage VMware ESXi with vCenter server.

VMware ESXi with Vcenter Server

Figure 1-1. VMware vSphere Components

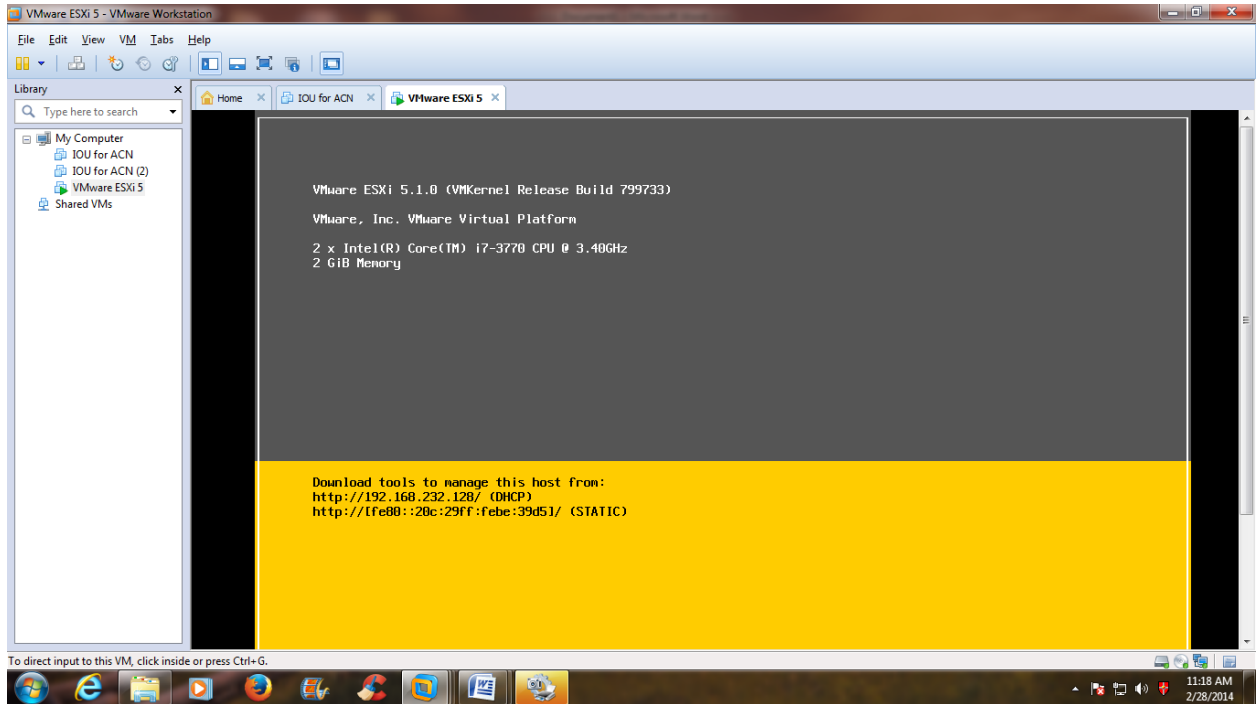


Each vCenter Server system manages multiple ESX hosts. You can run the vSphere Client and vSphere Web. Access on multiple workstations.

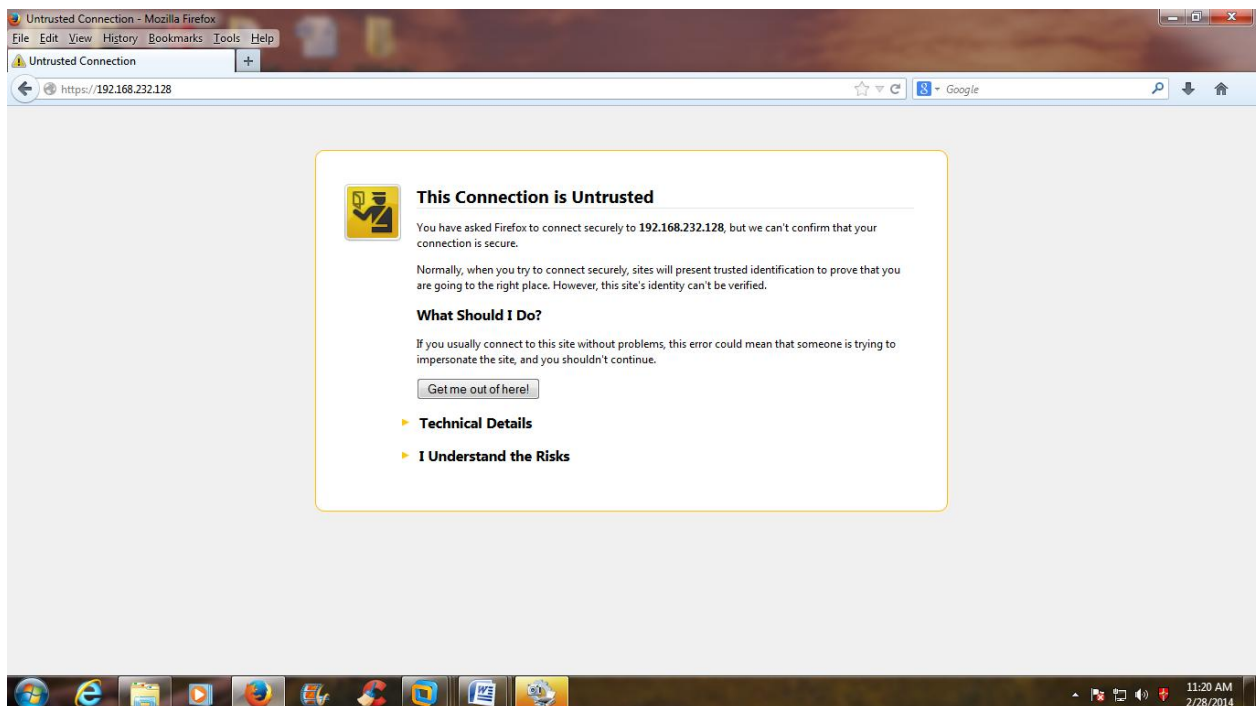
The major VMware vSphere components are:

- 1. VMware ESXi Embedded** Provides a virtualization layer that abstracts the processor, memory, storage, and networking resources of the physical host into multiple virtual machines. You do not need to install ESXi Embedded because it is embedded as firmware on hardware that you purchase from a vendor.
- 2. VMware ESXi Installable** Provides a virtualization layer that abstracts the processor, memory, storage, and networking resources of the physical host into multiple virtual machines. You can install ESXi Installable on any hard drive on your server.
- 3. vCenter Server:** A service that acts as a central administrator for ESX/ESXi hosts connected on a network. This service directs actions on the virtual machines and the hosts. The vCenter Server is the working core of vCenter. You can have multiple vCenter Server systems joined to a Linked Mode group. This allows you to log in to any single instance of vCenter Server and view and manage the inventories of all the vCenter Server systems in the group.
- 4. vSphere Client** Installs on a Windows machine and is the primary method of interaction with VMware vSphere. The vSphere Client acts as a console to operate virtual machines and as an administration interface into the vCenter Server systems and ESX hosts. The vSphere Client is downloadable from the vCenter Server system and ESX hosts. The vSphere Client includes documentation for administrators and console users.

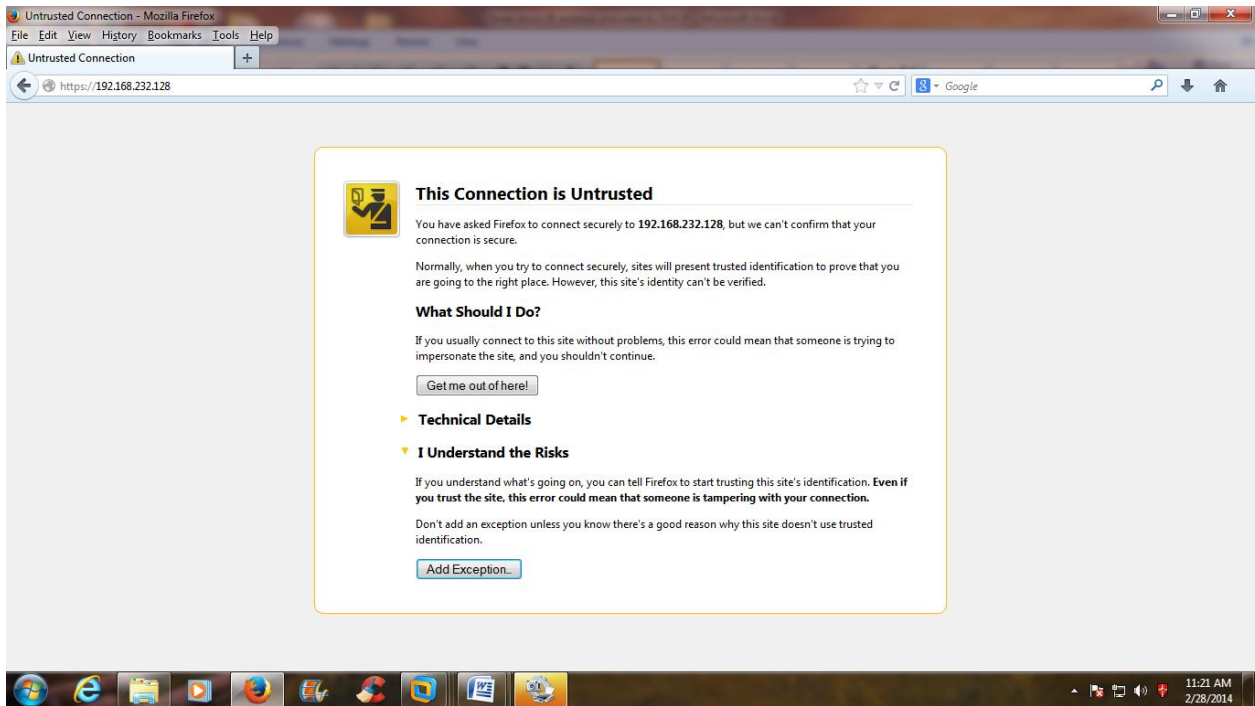
STEP 1: After rebooting the server, it will provide an ip-address through DHCP. Note down IP Address provided by DHCP.



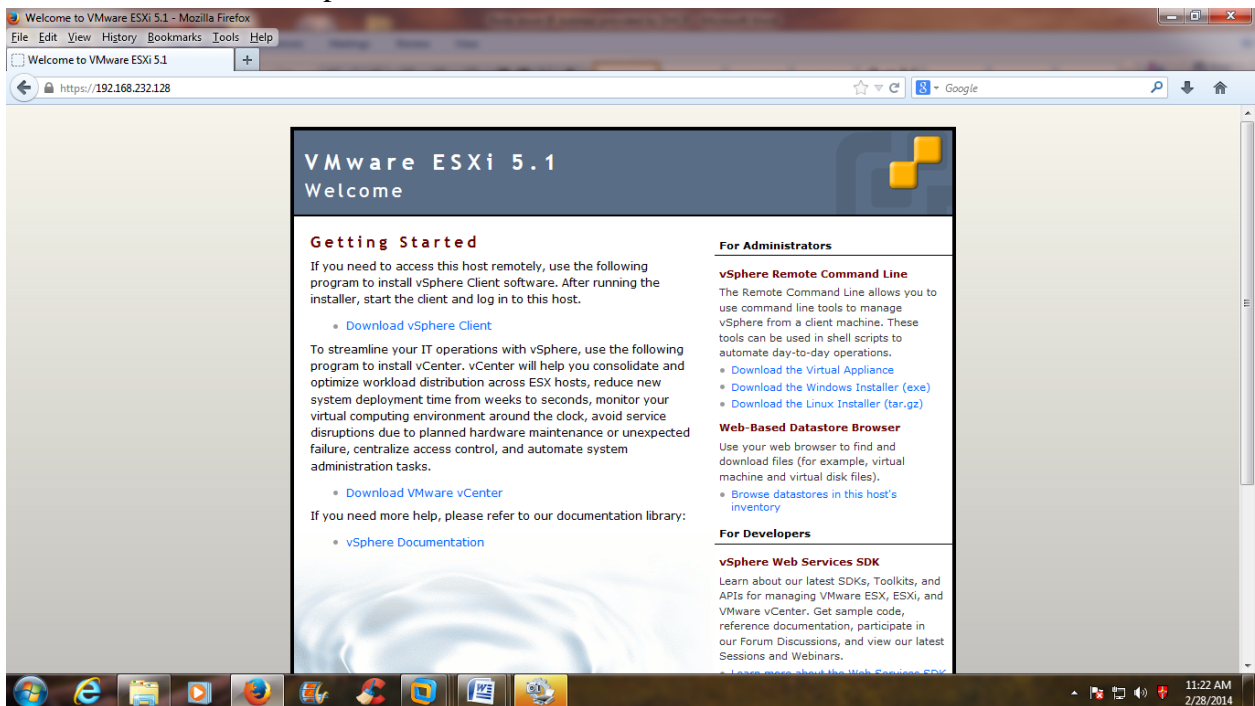
STEP 2: Open Browser & type respective IP Address. Click on I understand the Risks.

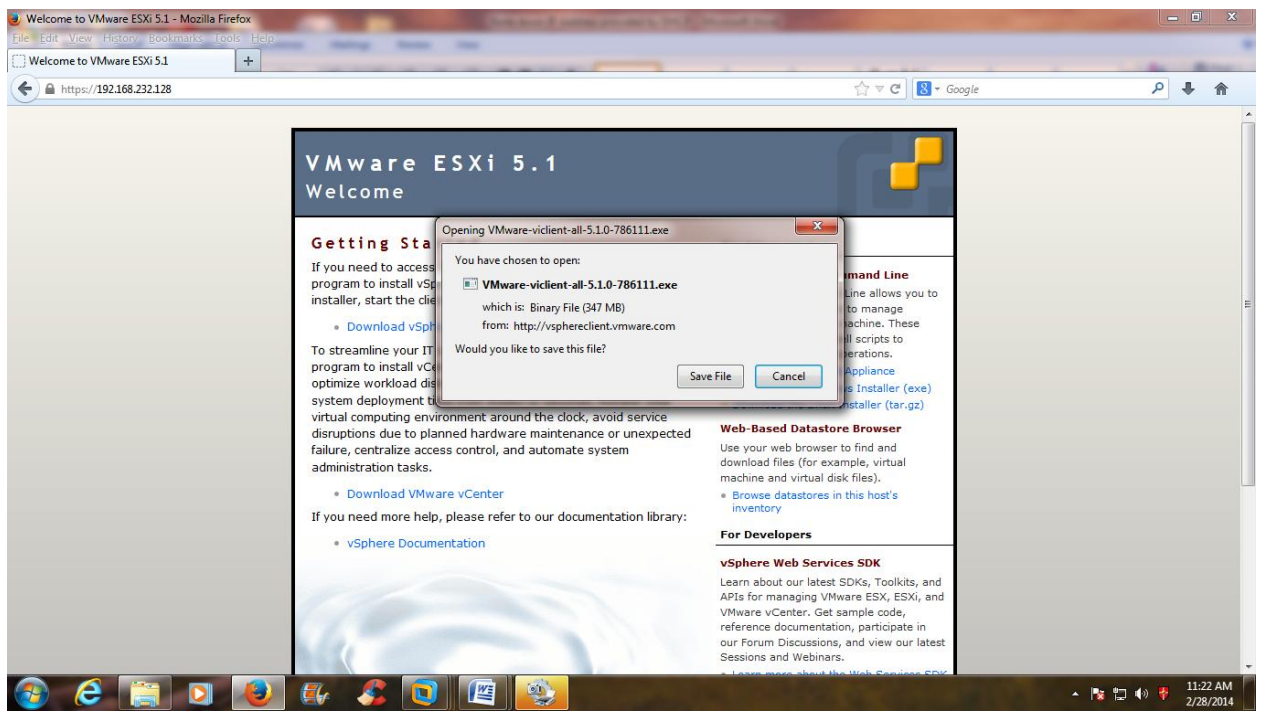


STEP 3: Click on Add Exception button. Click on Confirm Security Exception Button.

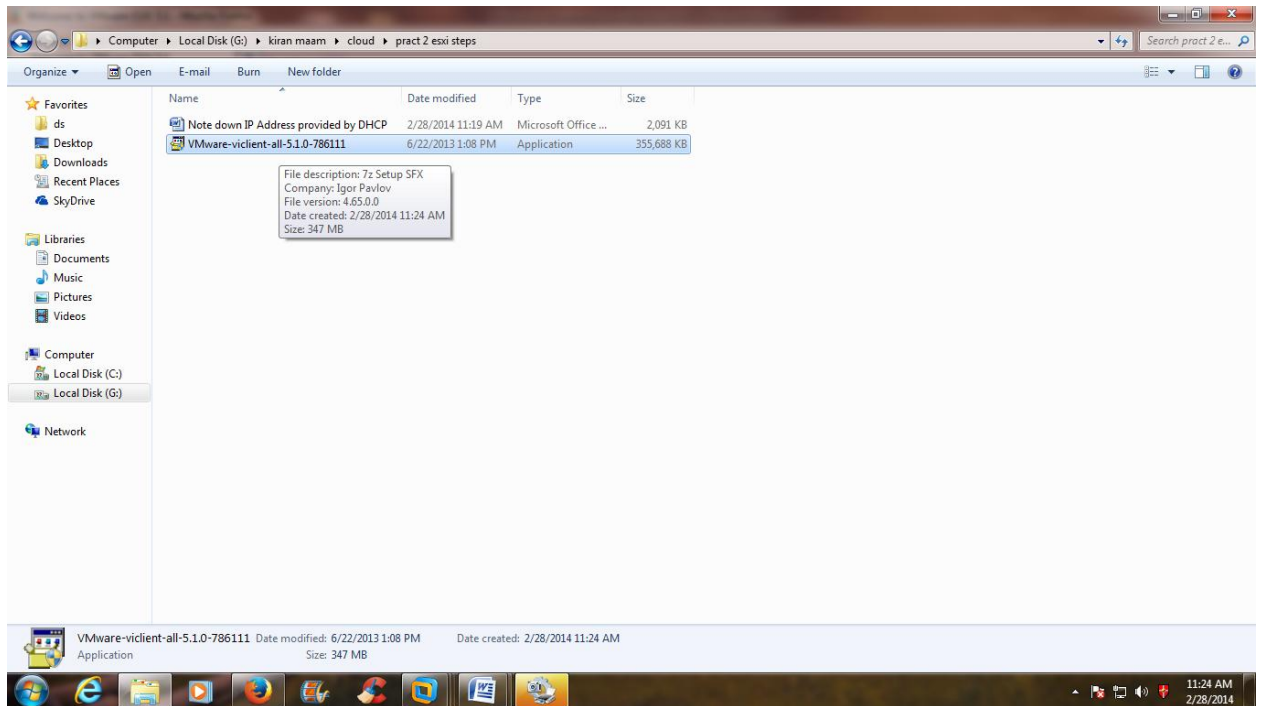


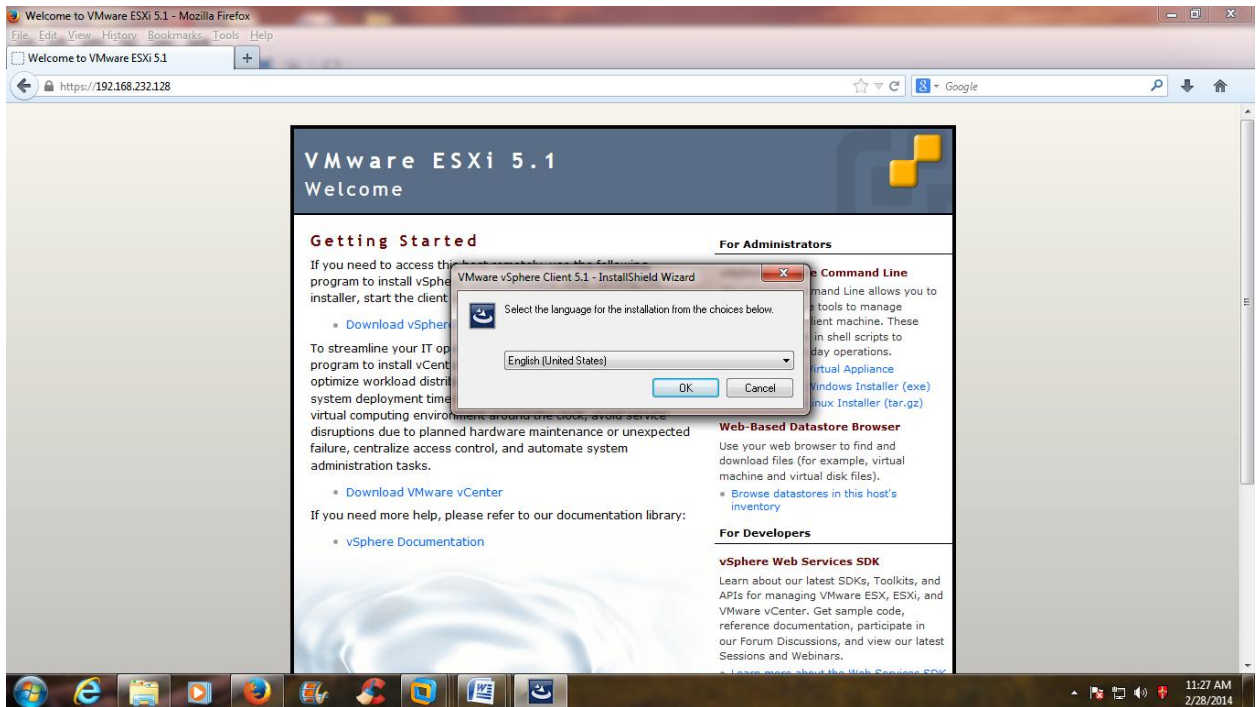
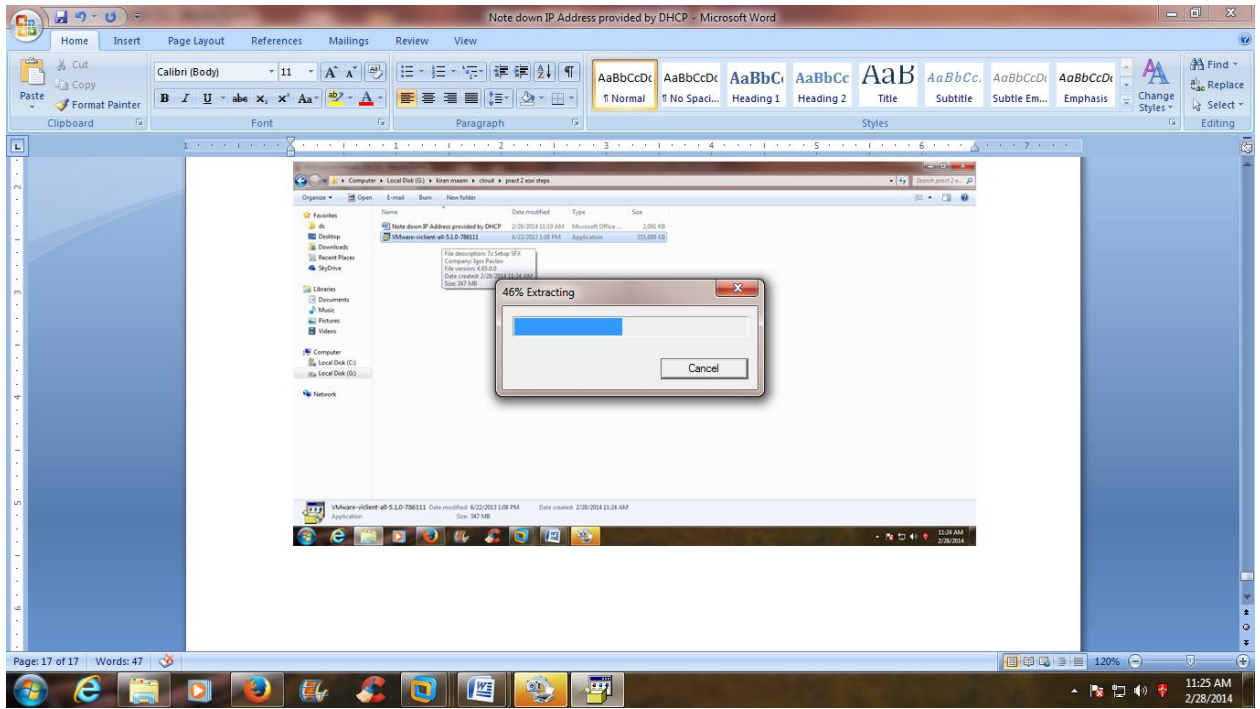
STEP 4: Double click on vSphere client to download & then install.

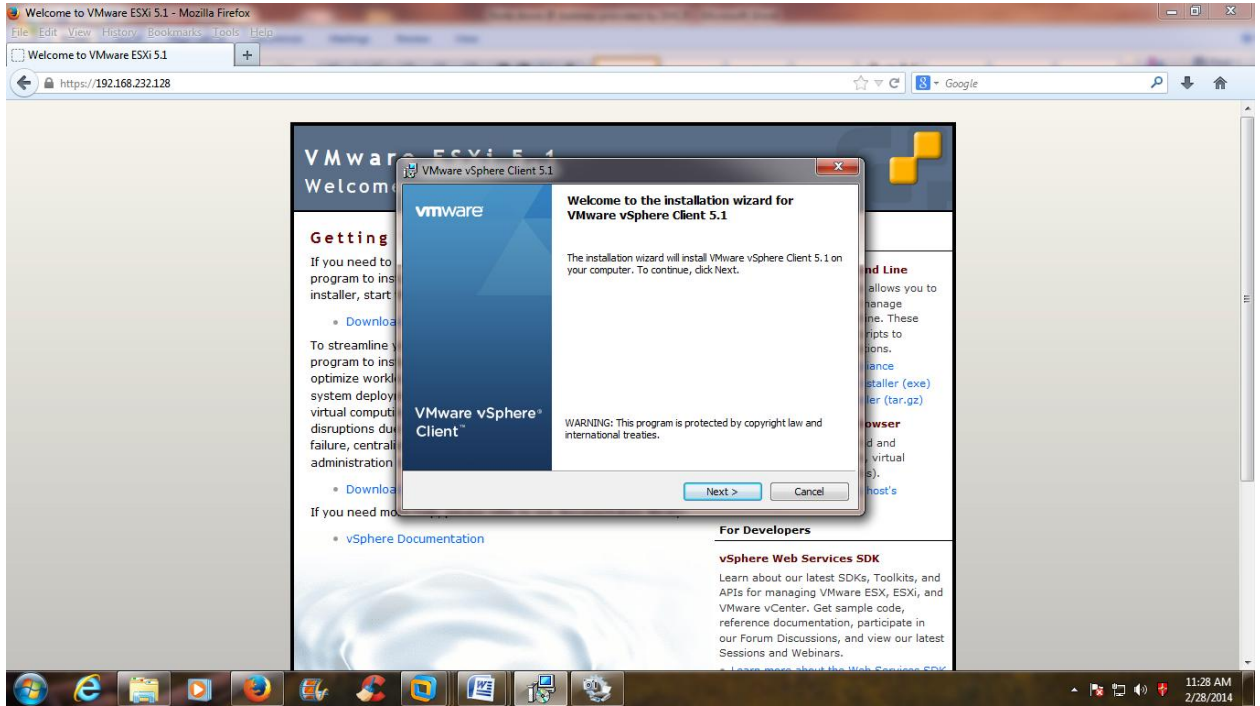
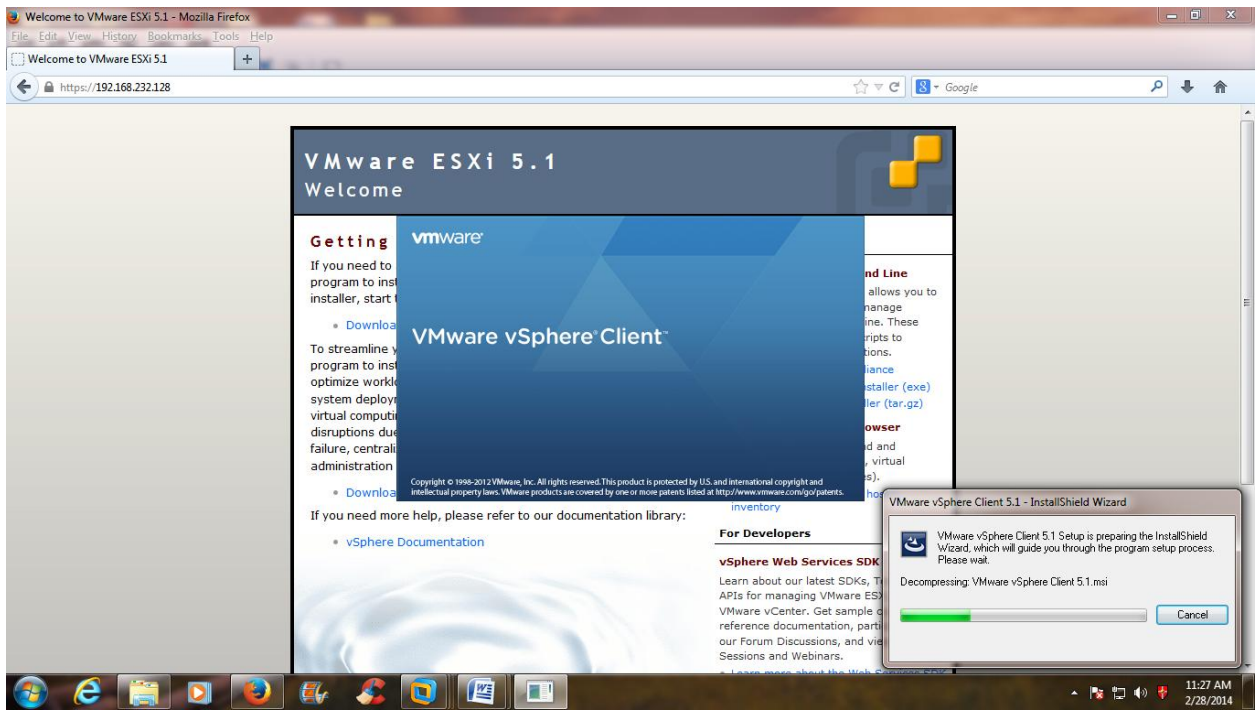


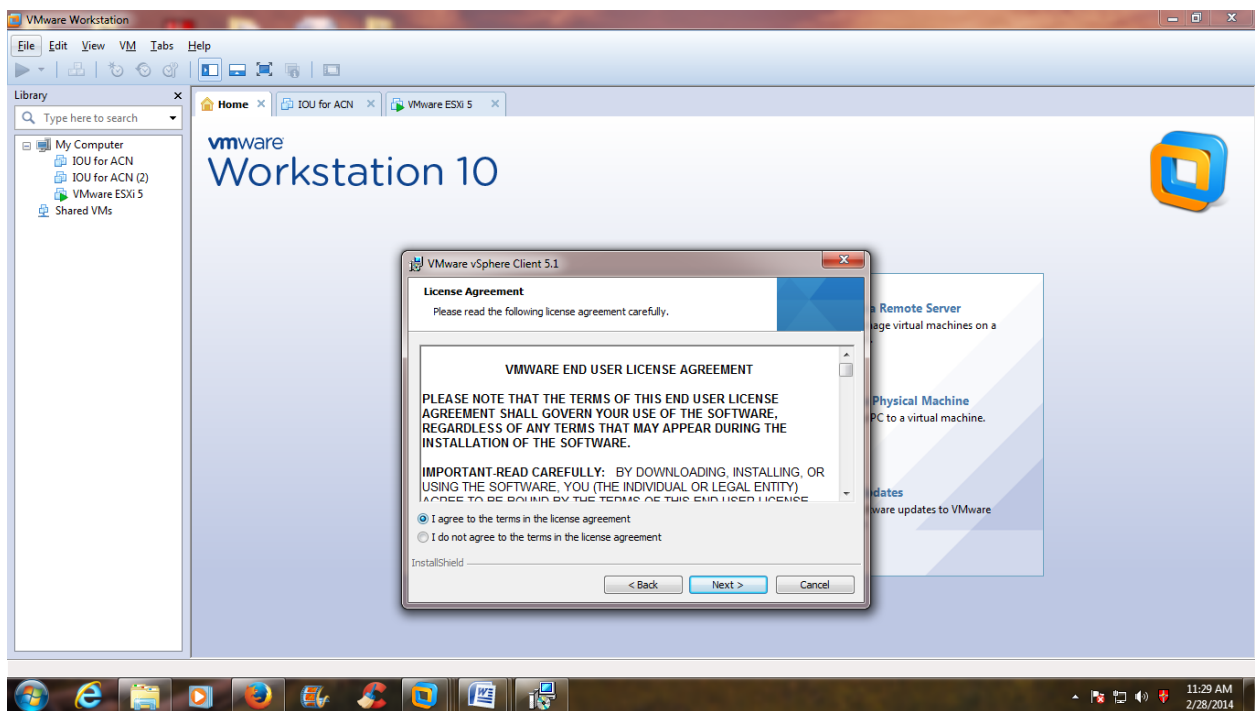
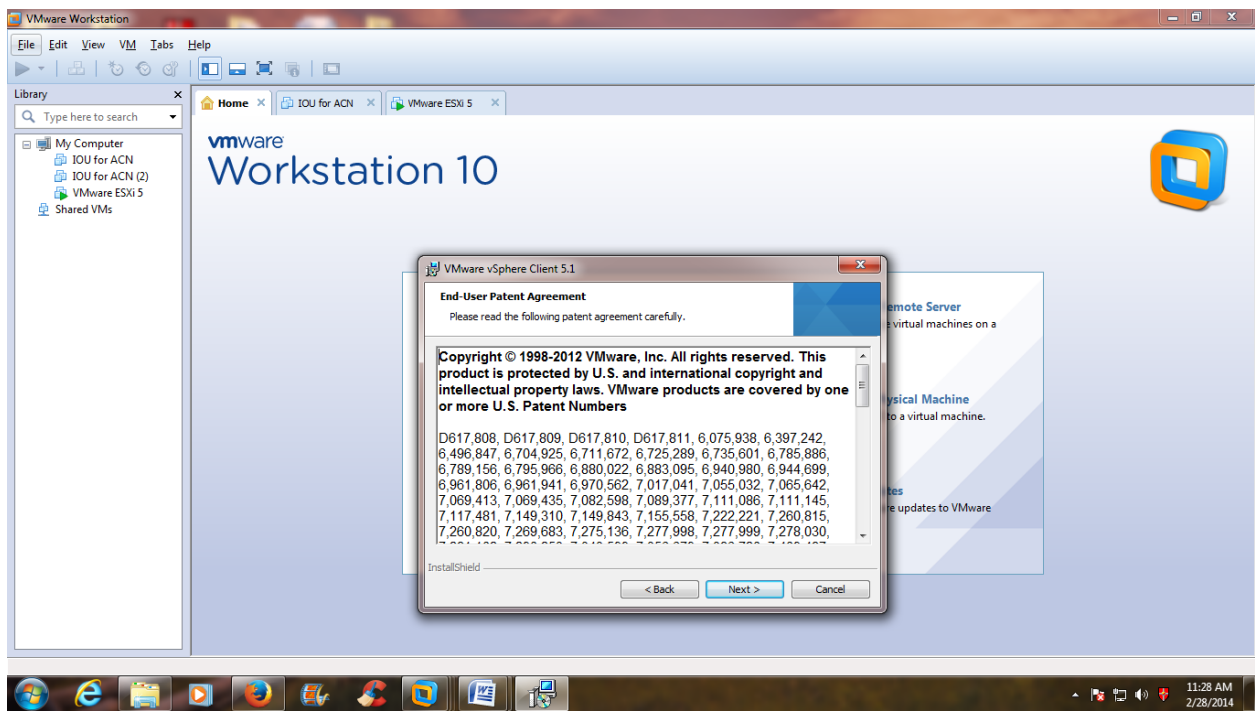


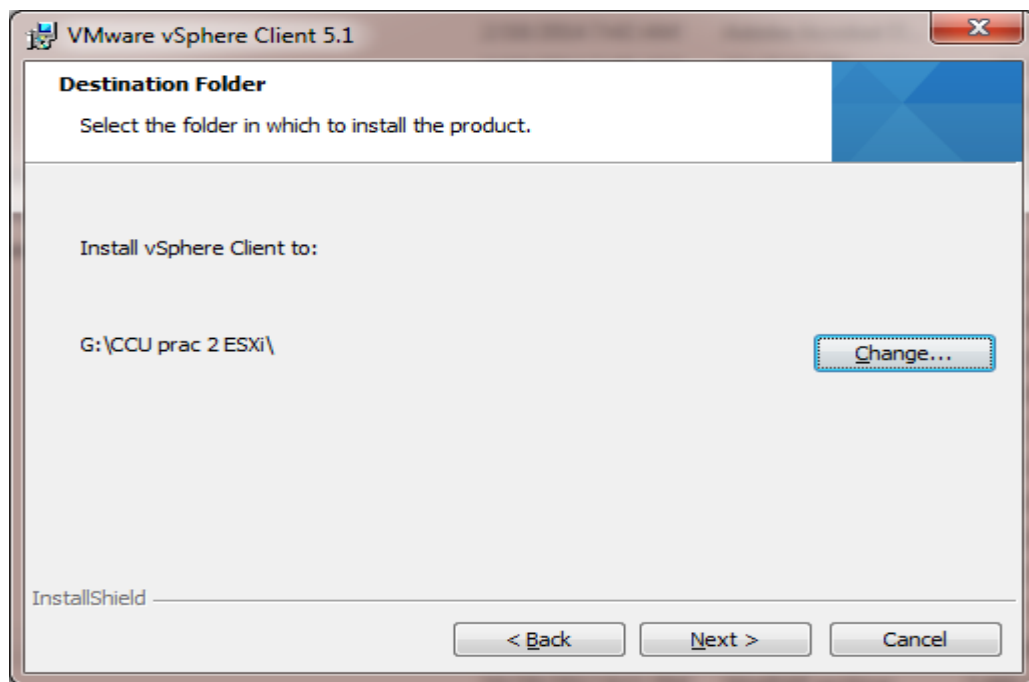
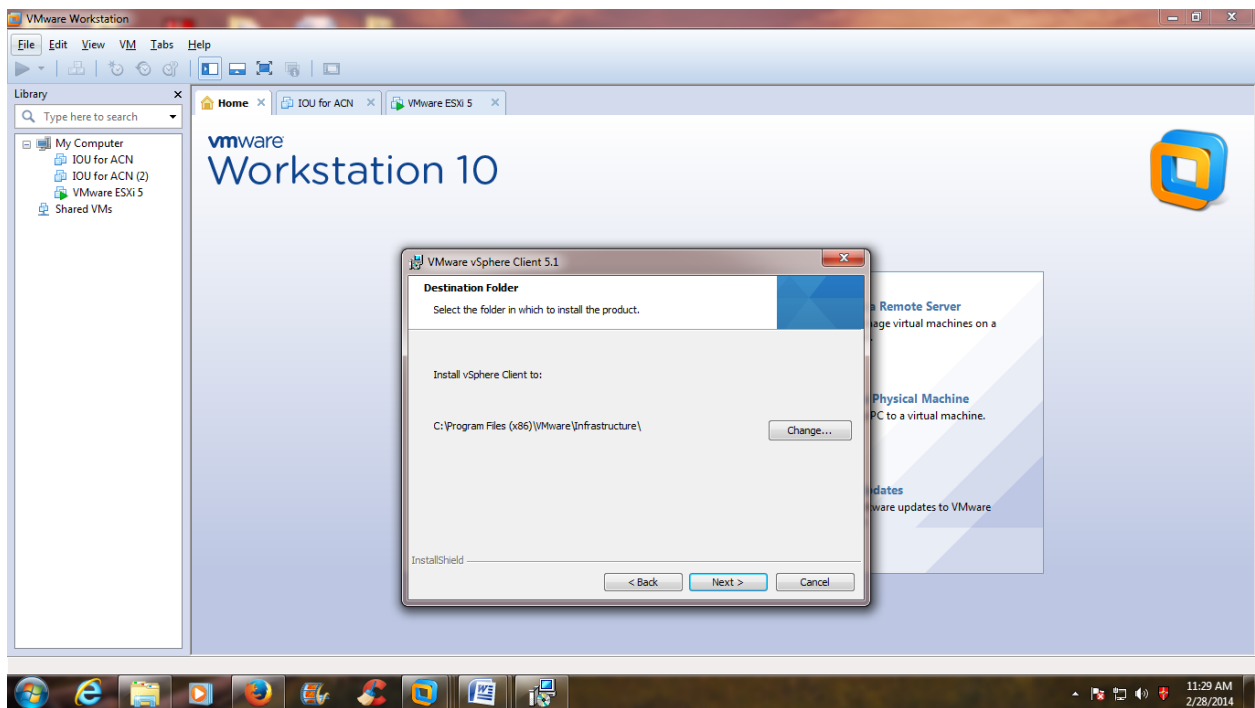
STEP 5: Now vSphere client is saved in a respective directory. Just double click on vclient to install it.

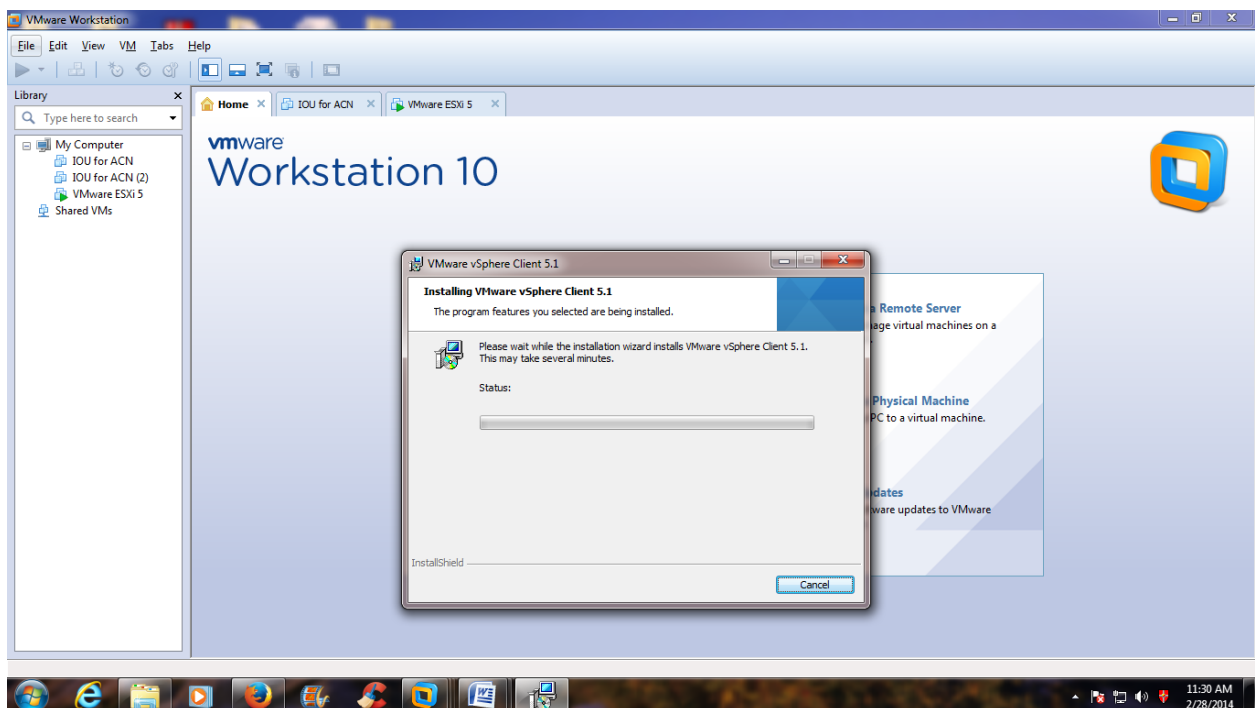
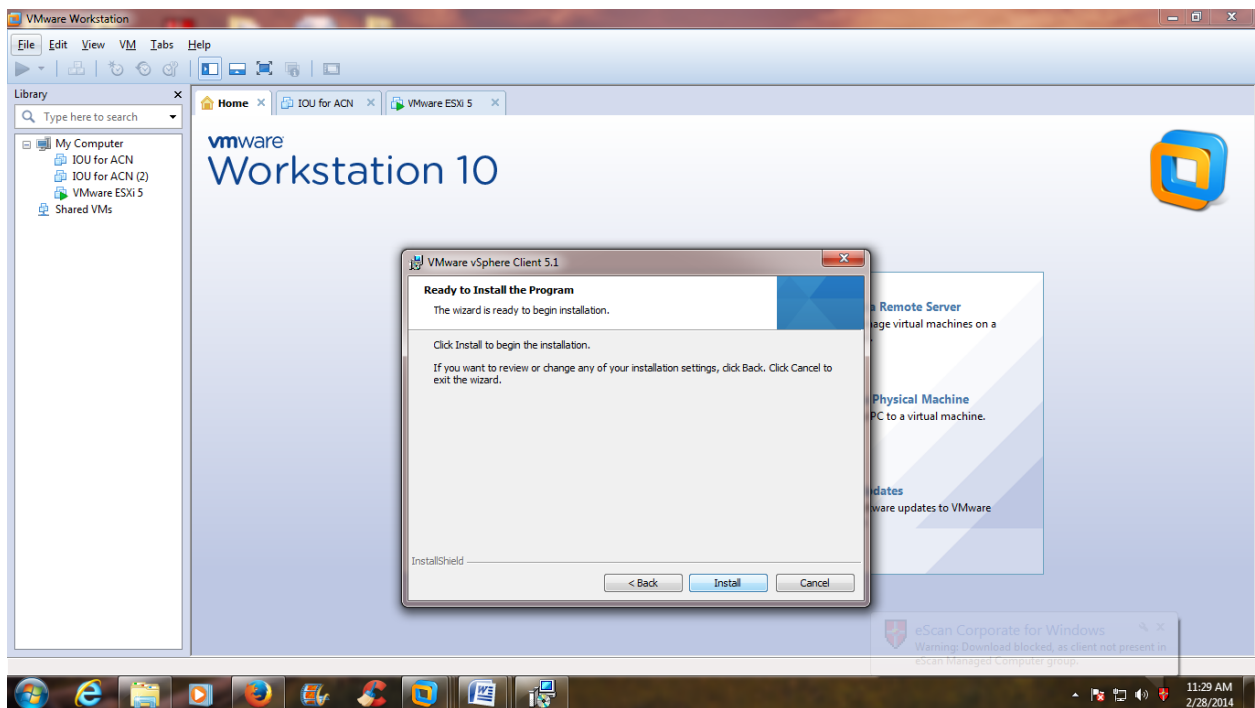


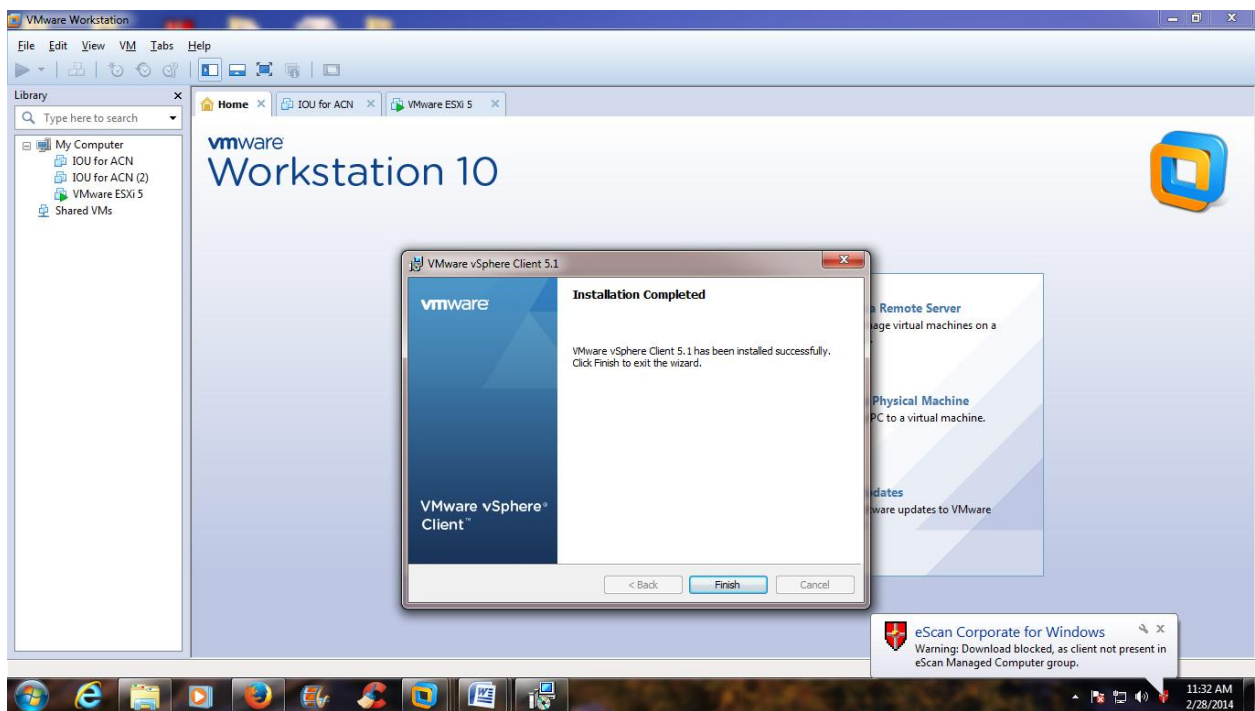
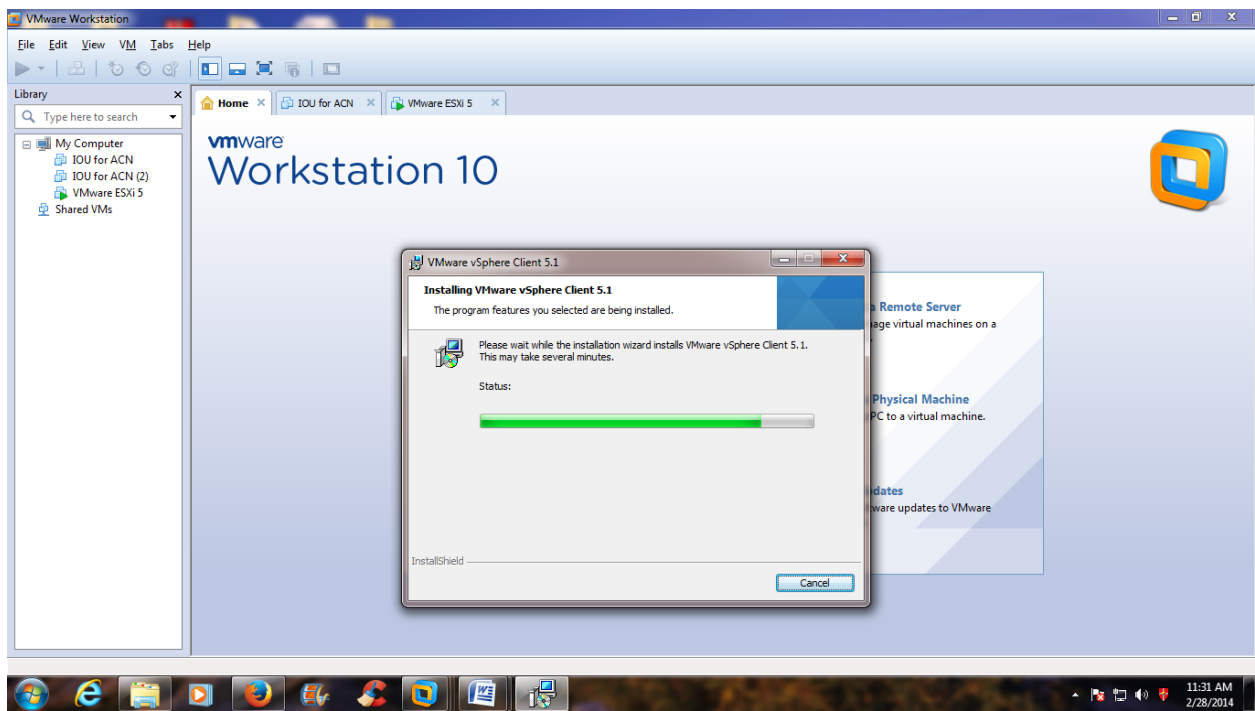


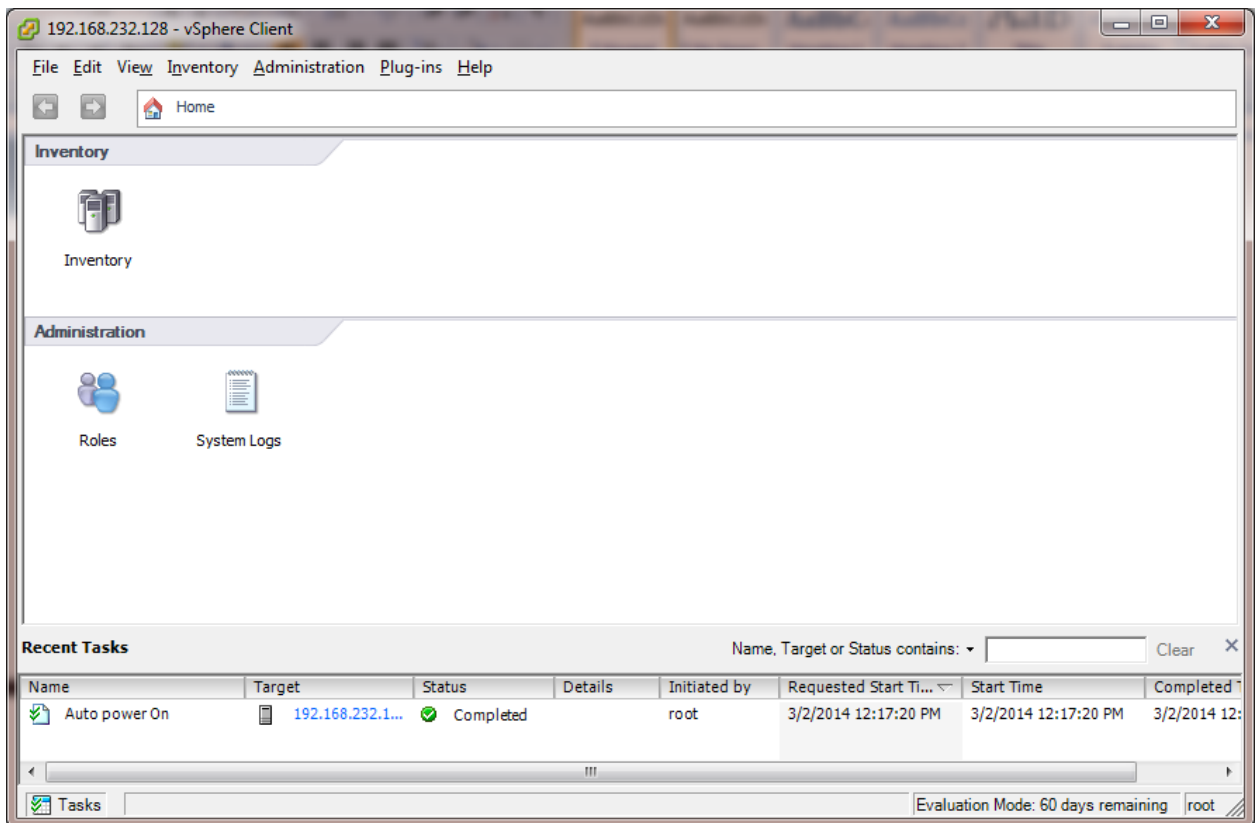
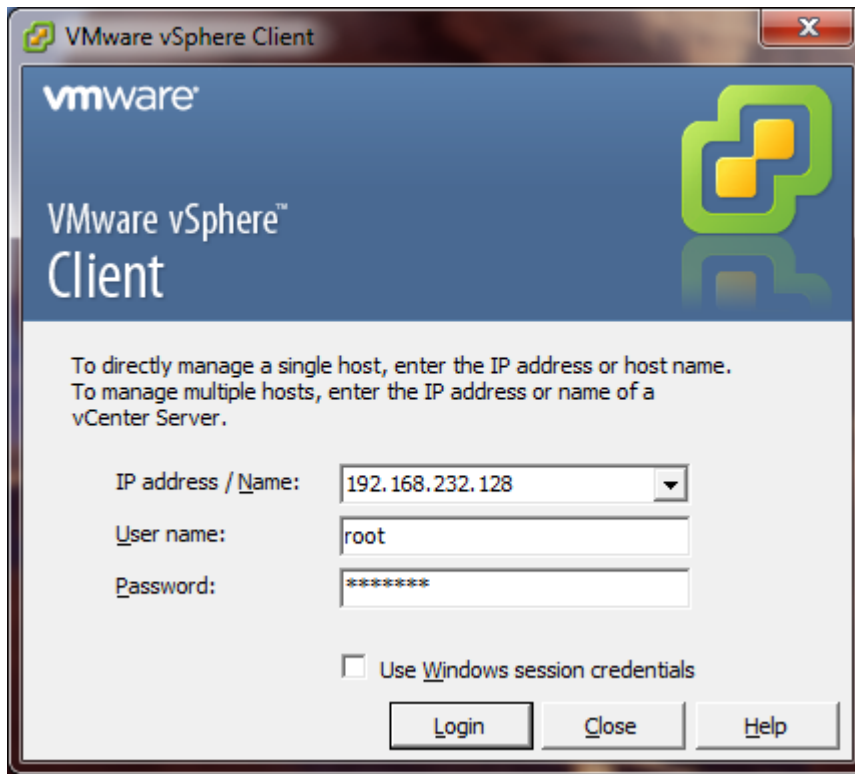


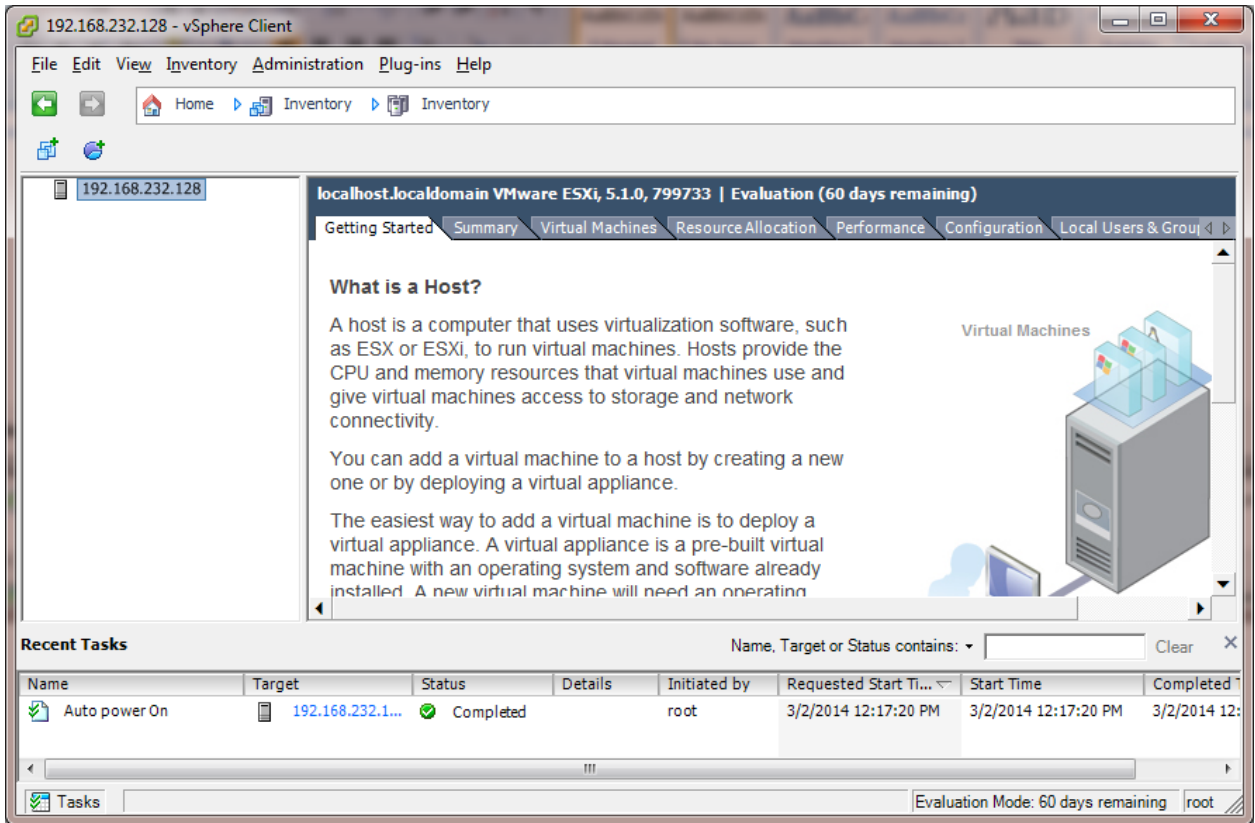




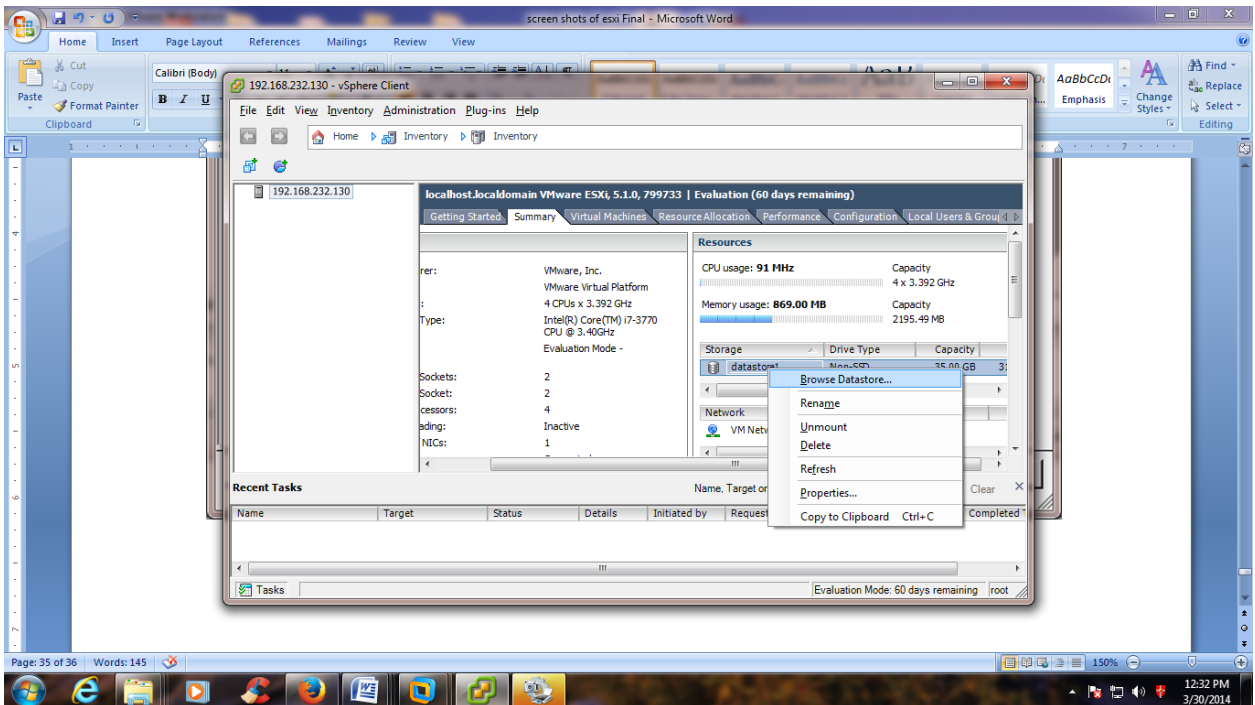


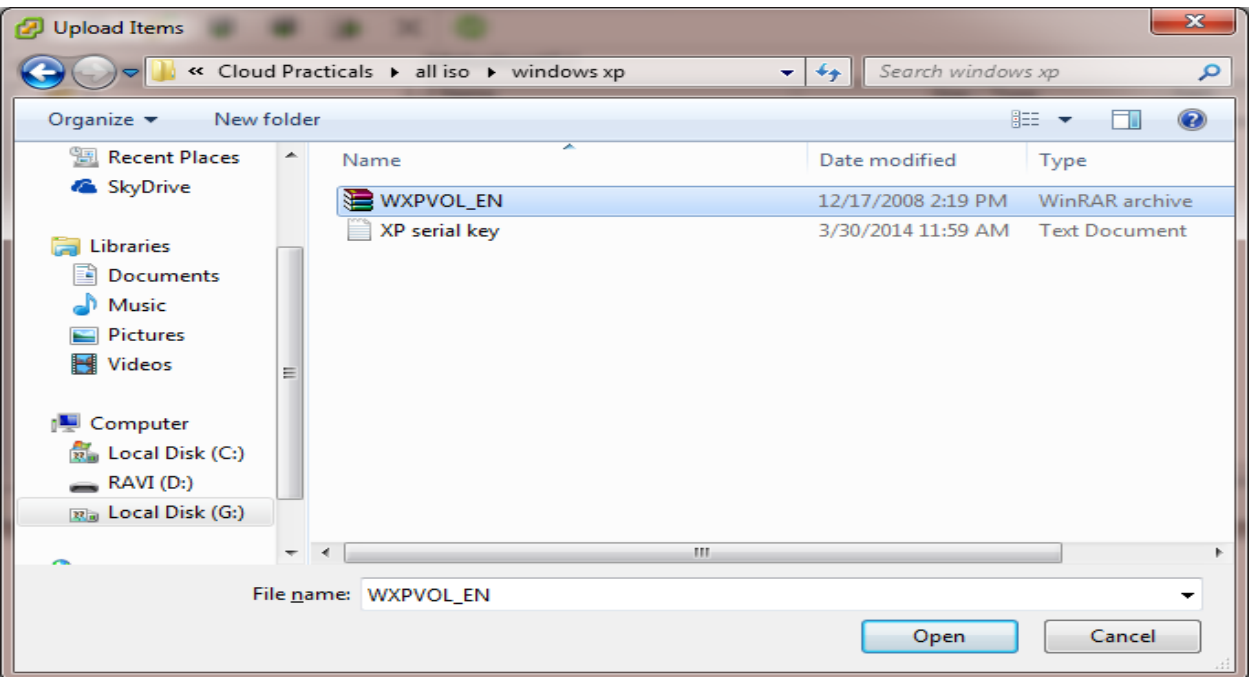
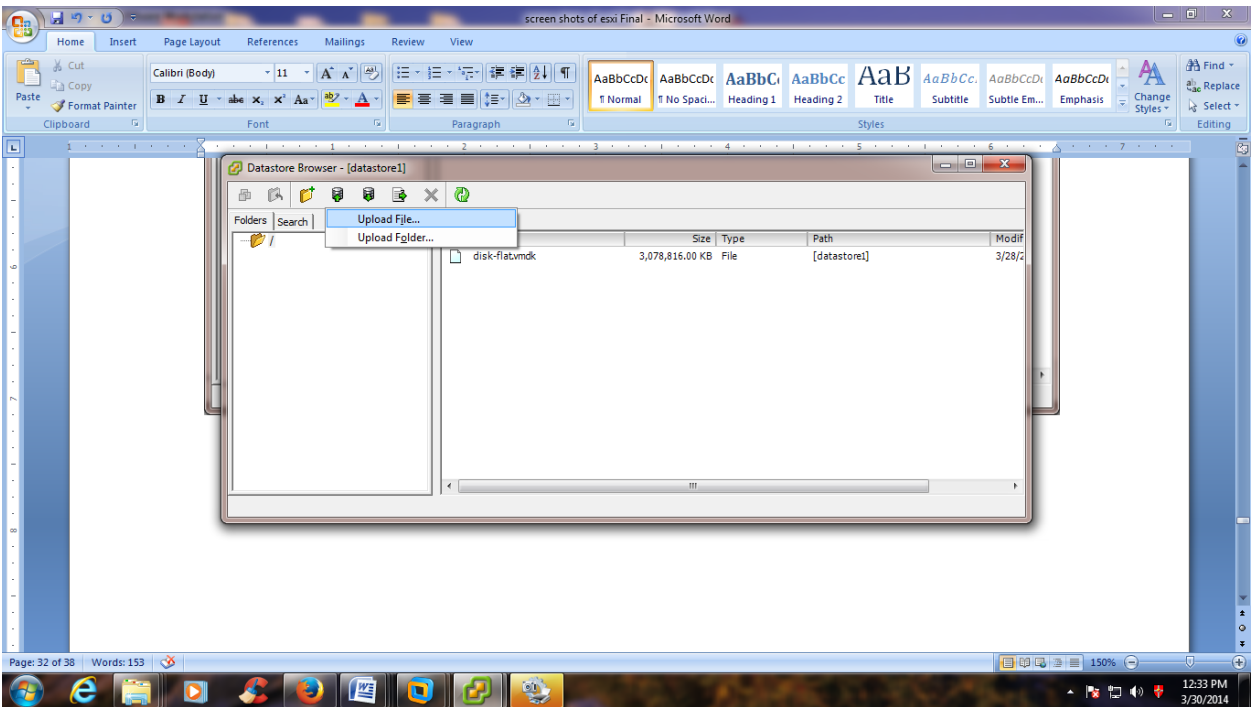
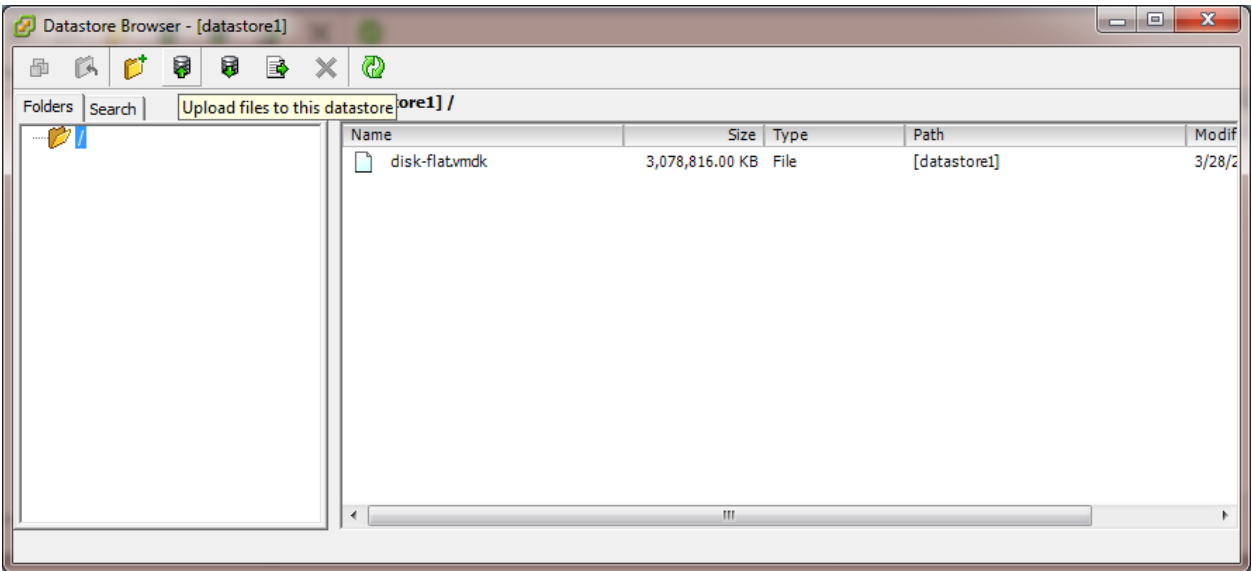


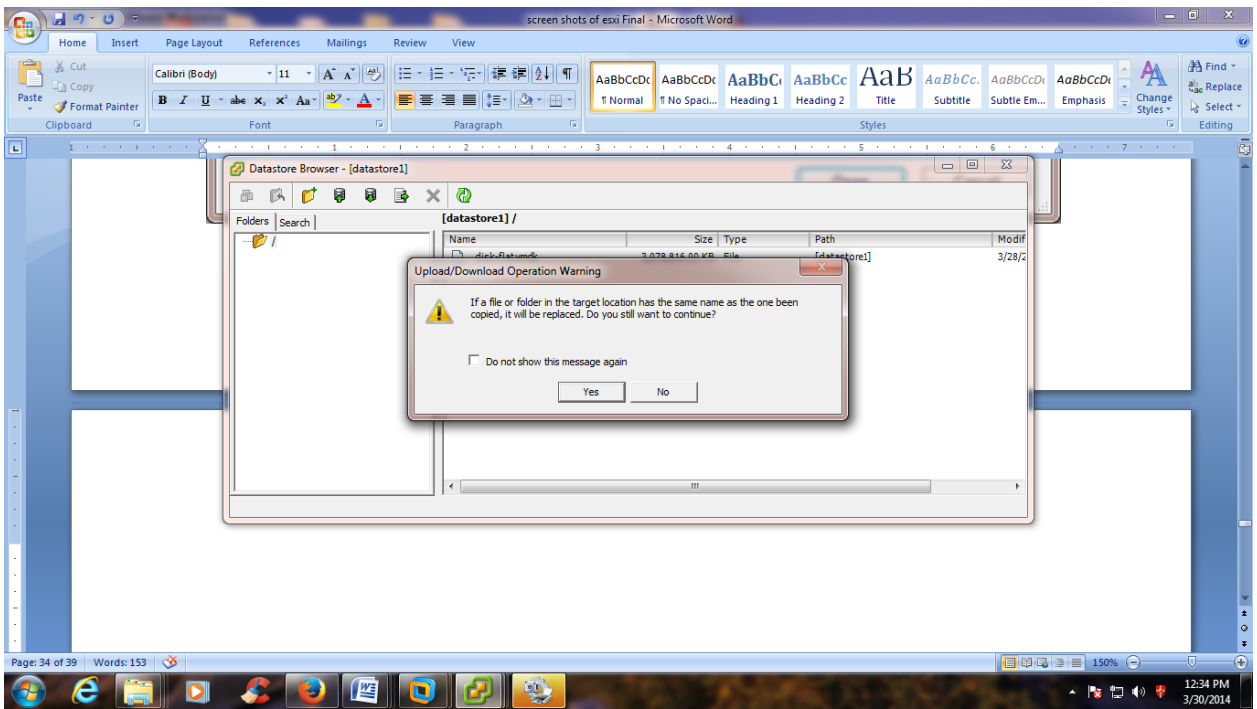




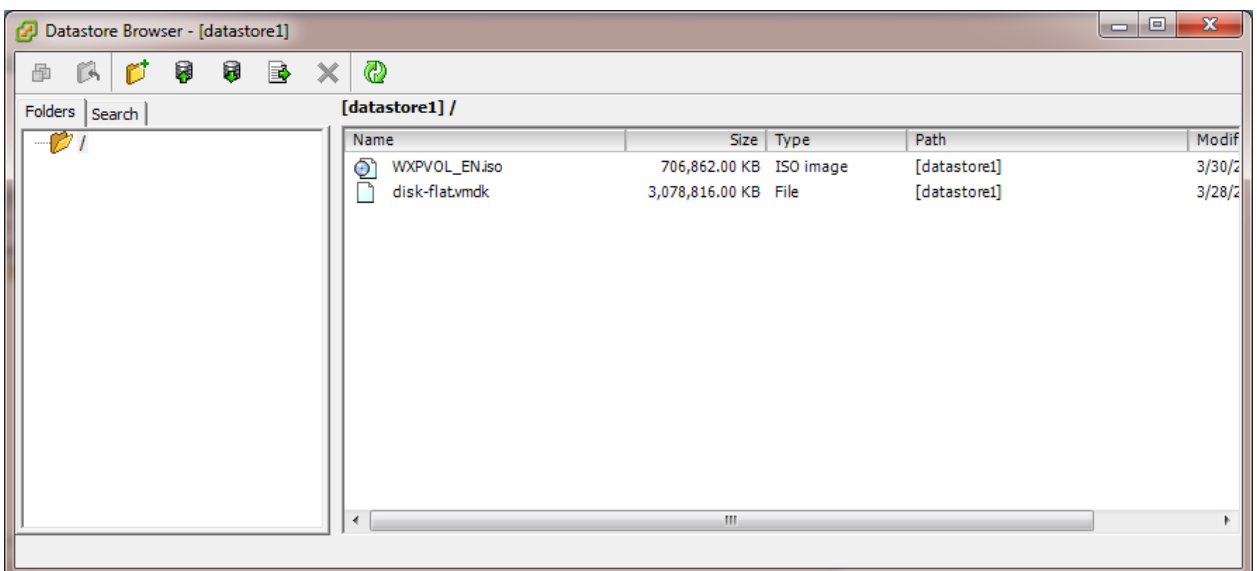
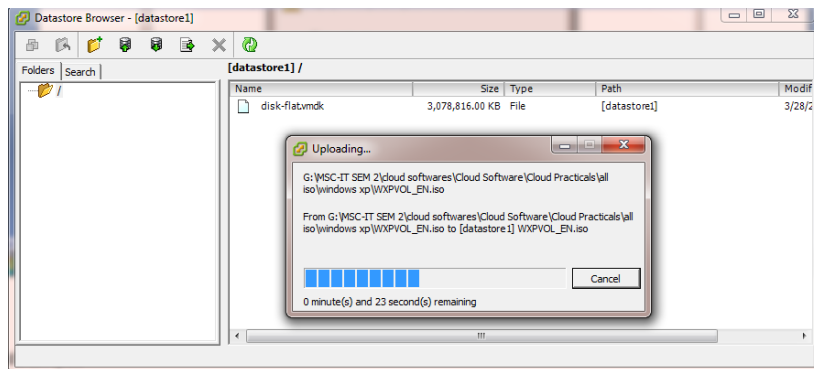
STEP 6: Add iso image of winxp in datastore first.



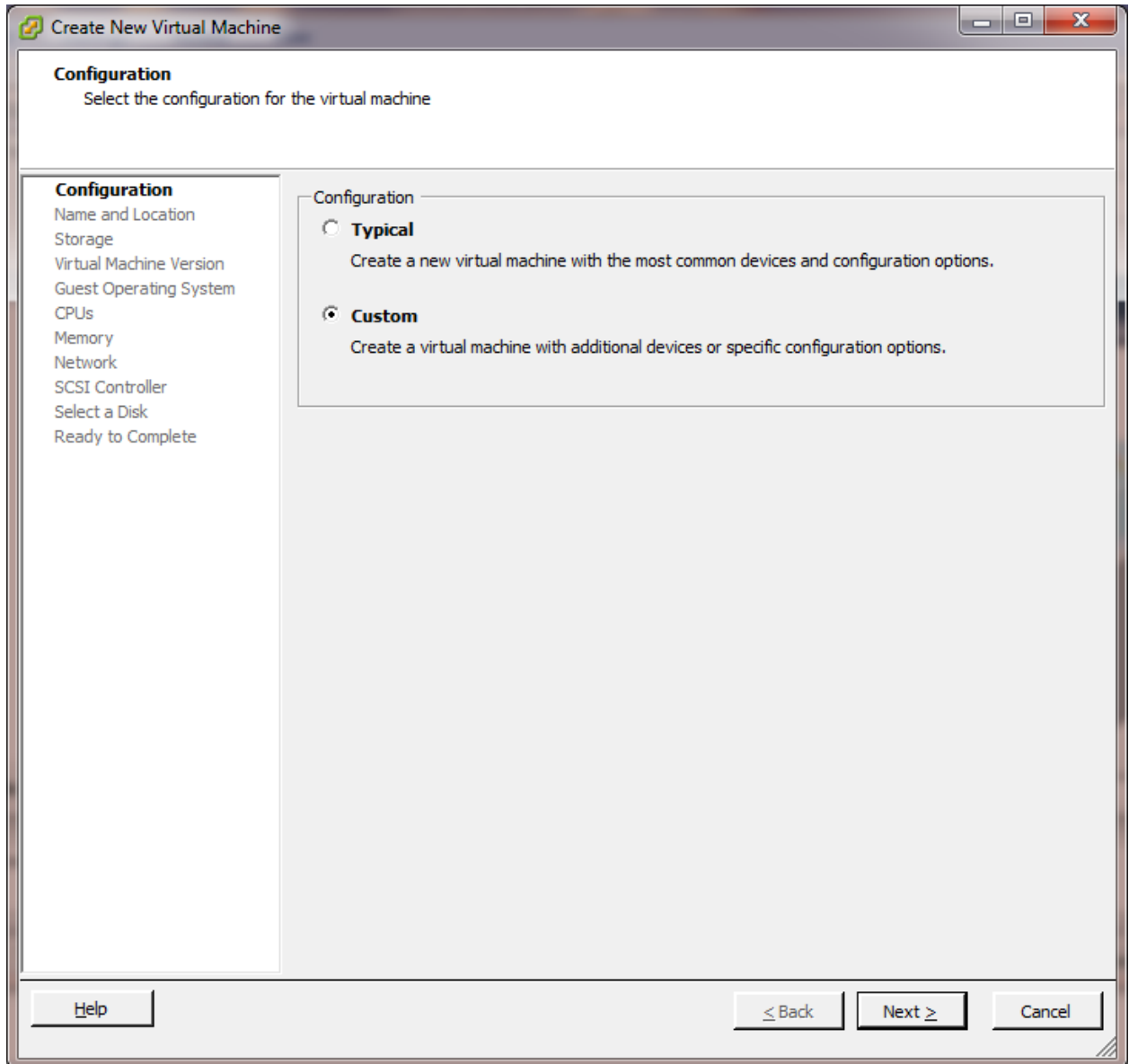
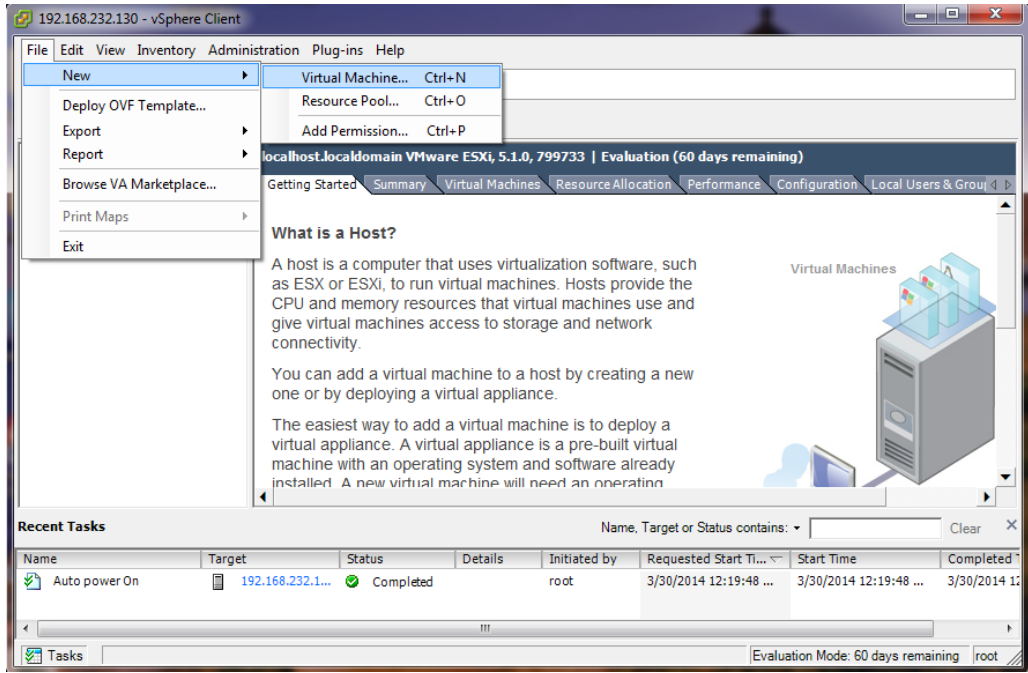


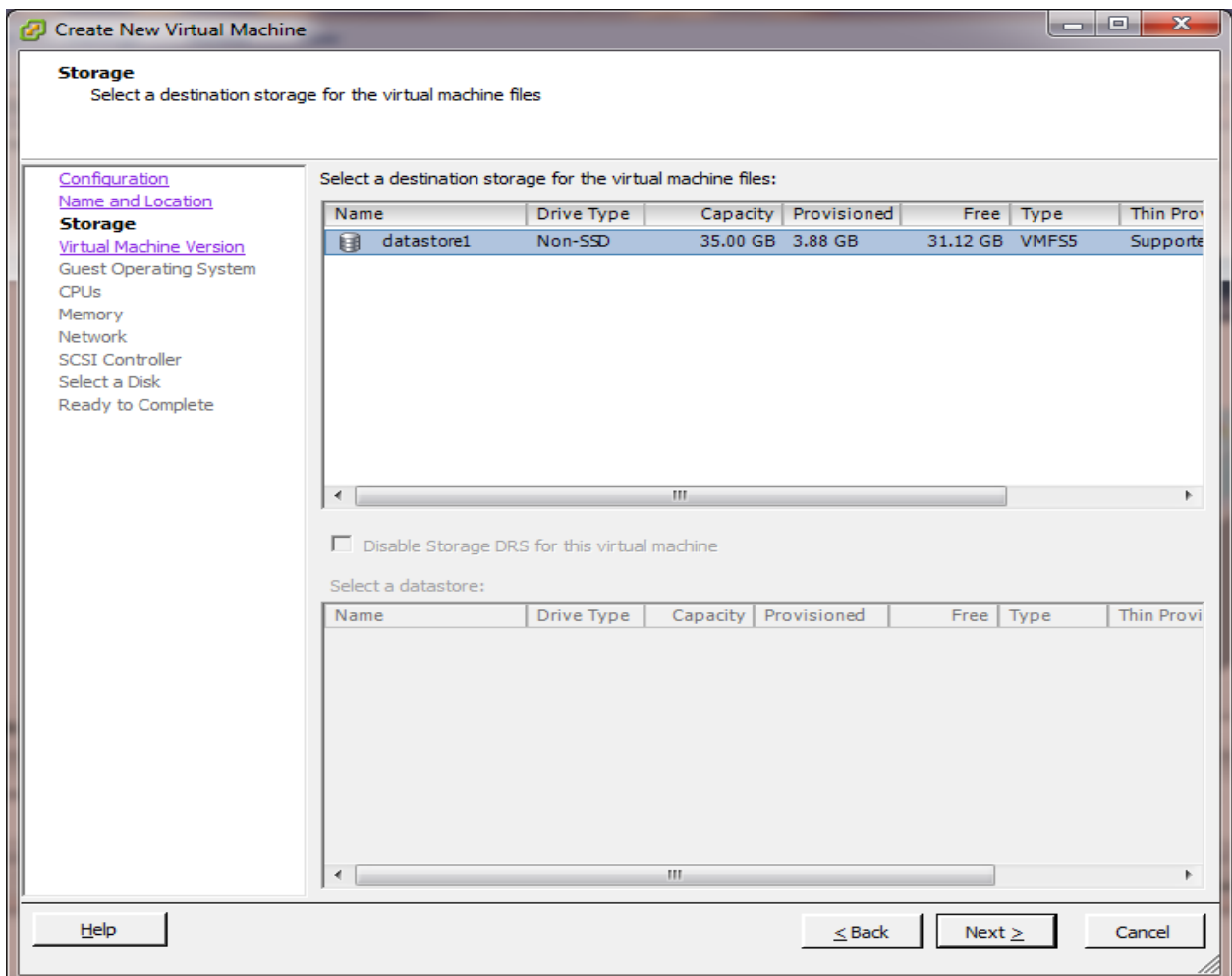
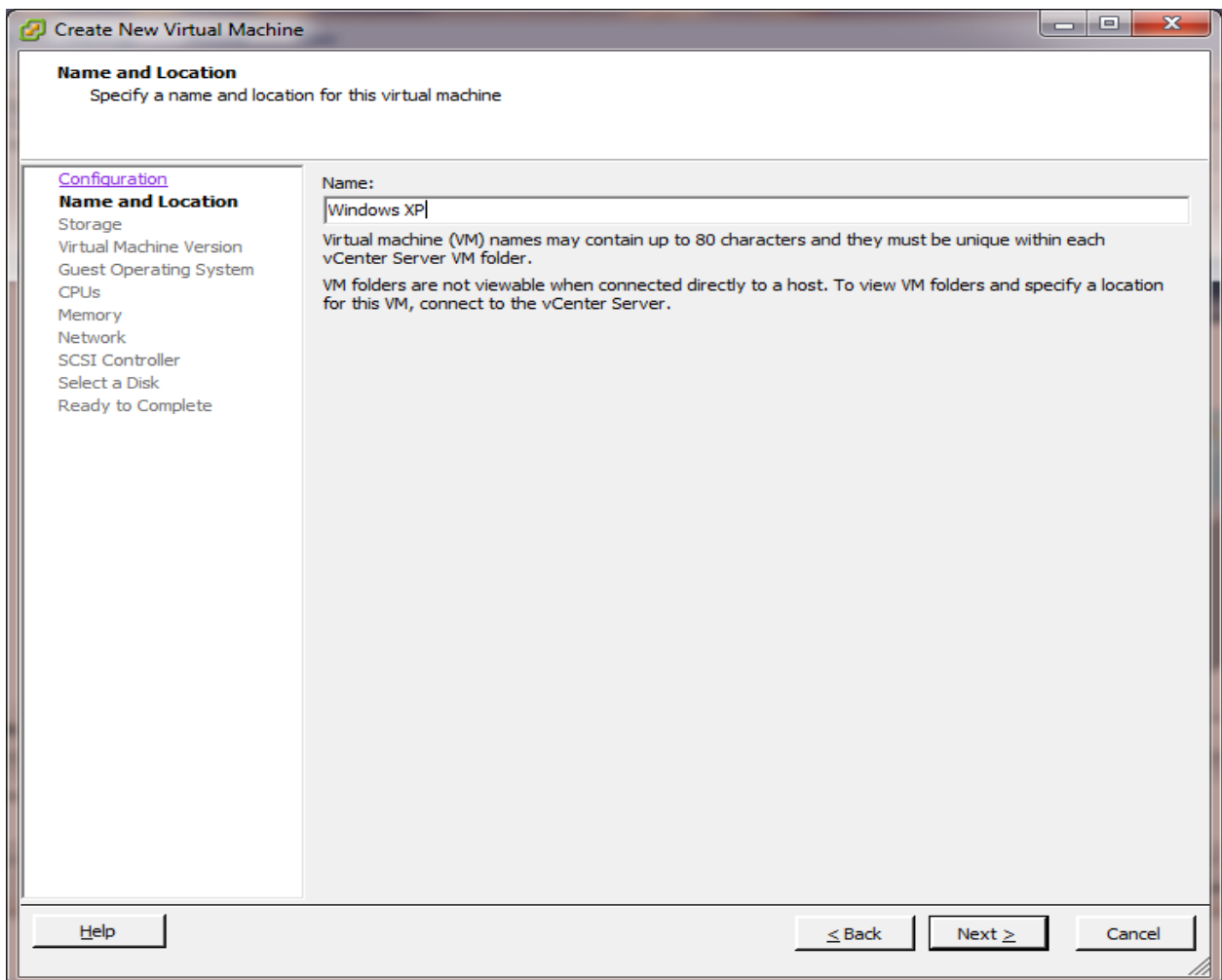


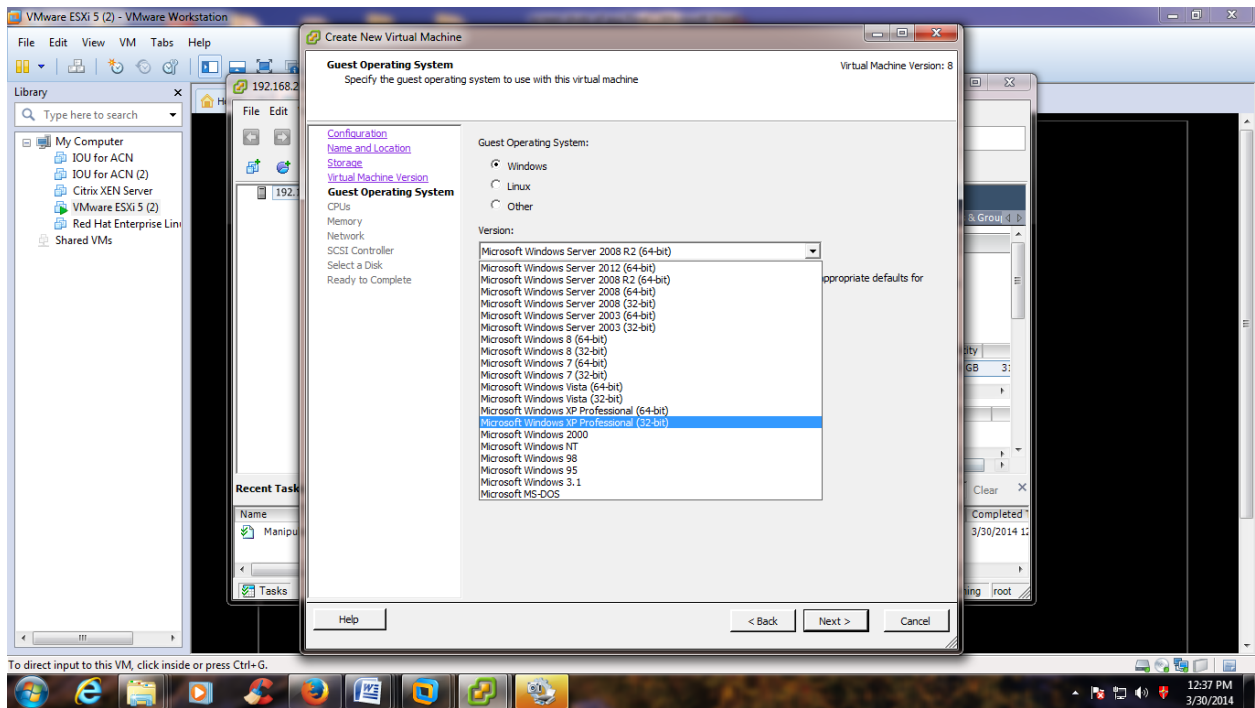
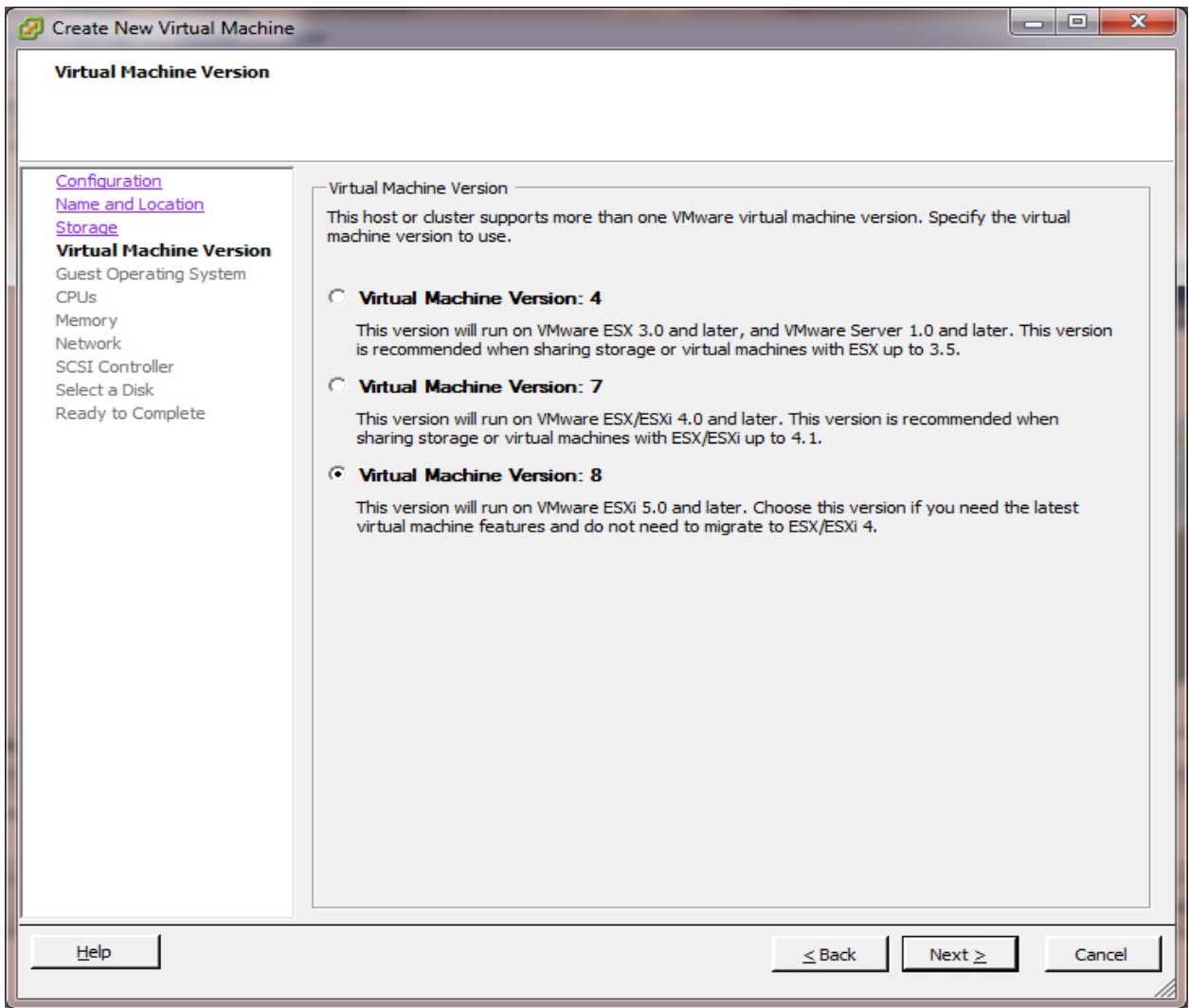
STEP 7: Click on yes.

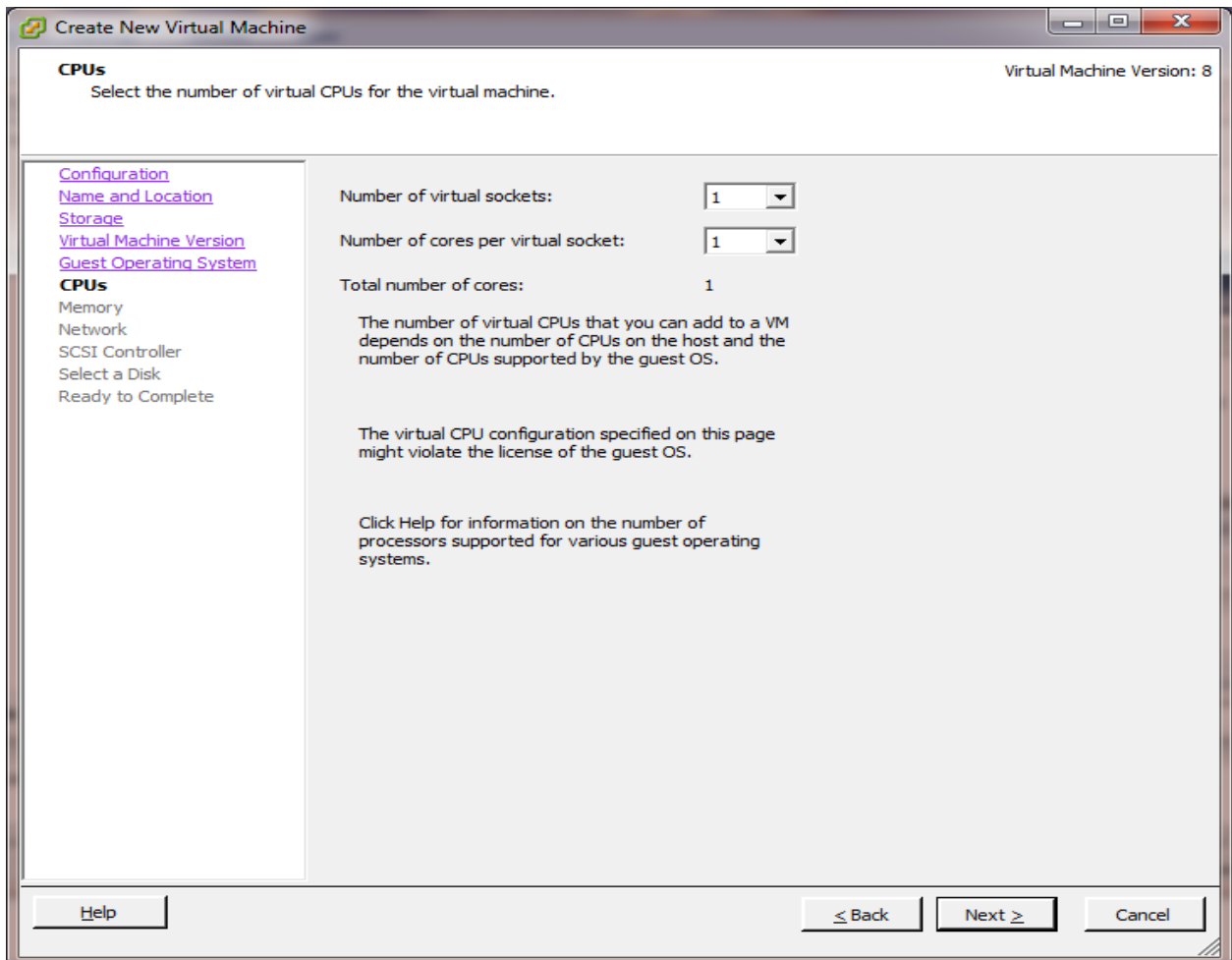
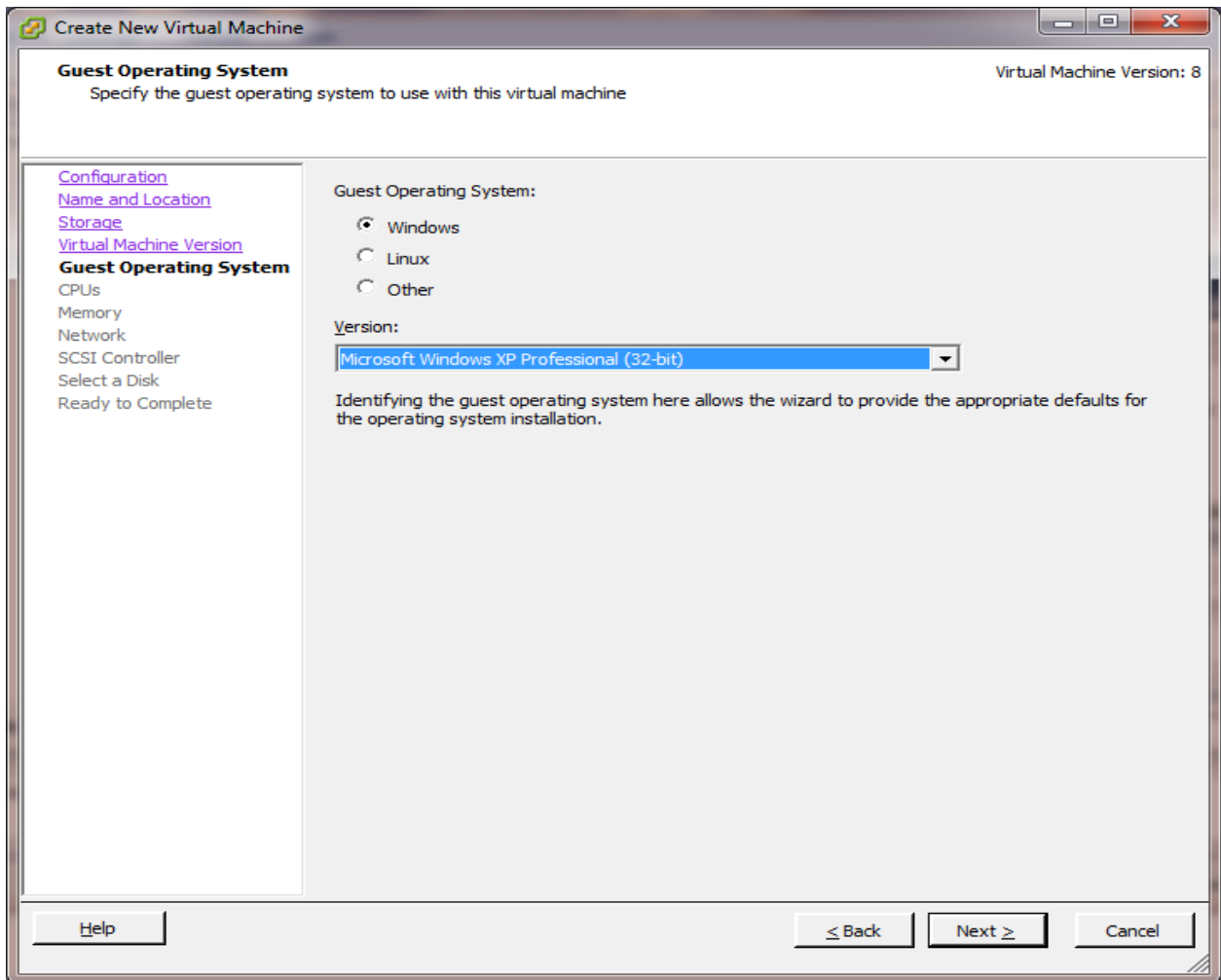


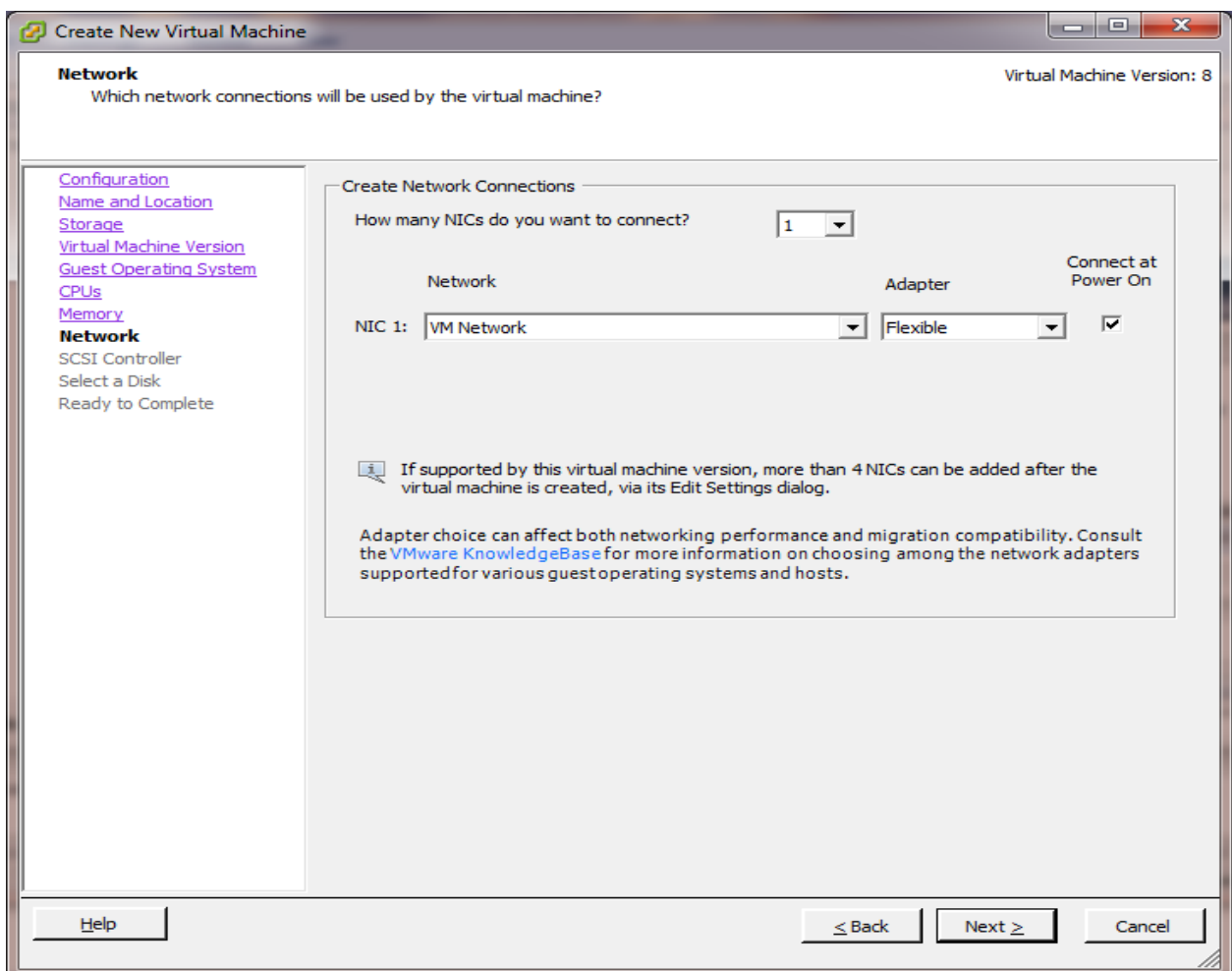
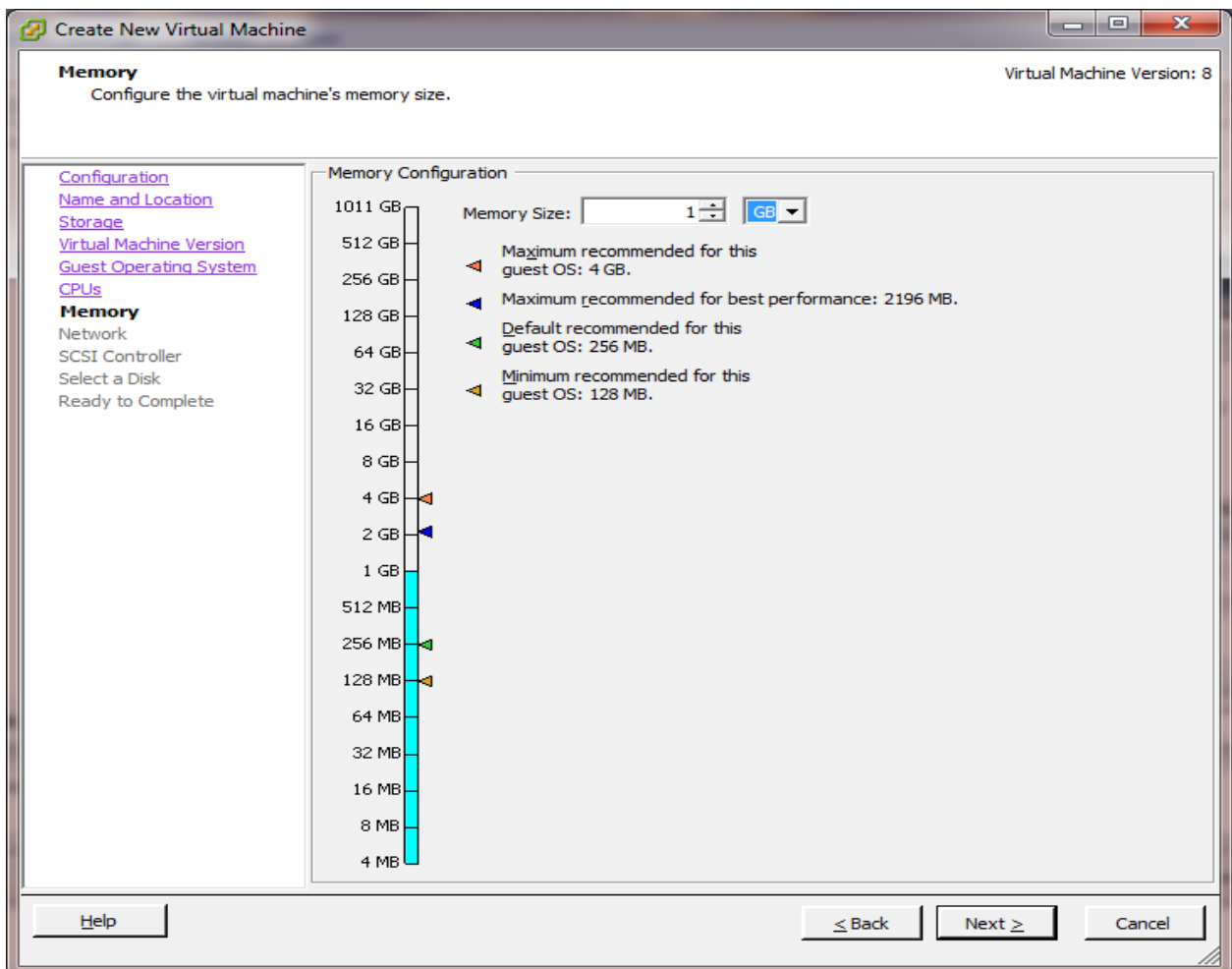
STEP 8: Click on close.

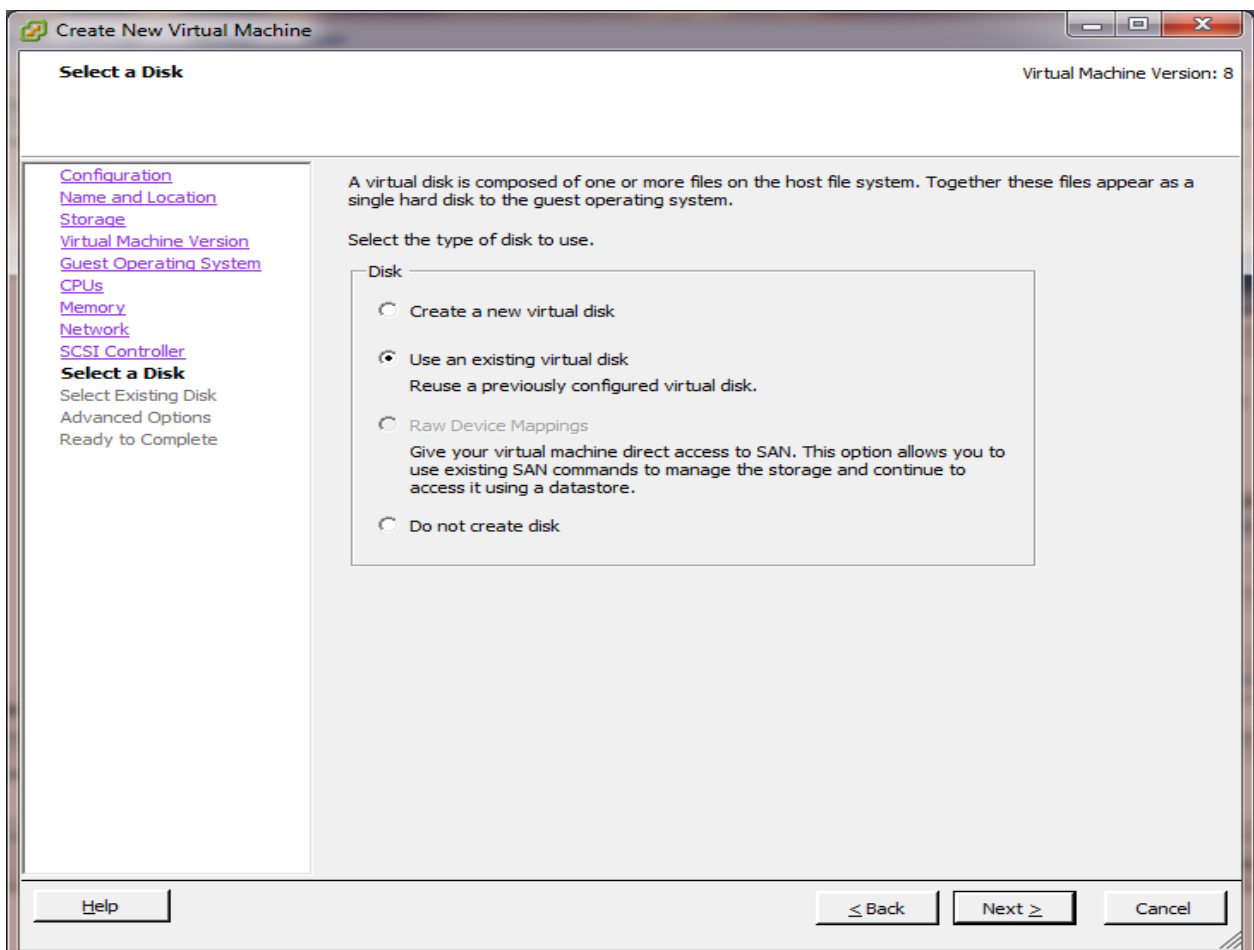
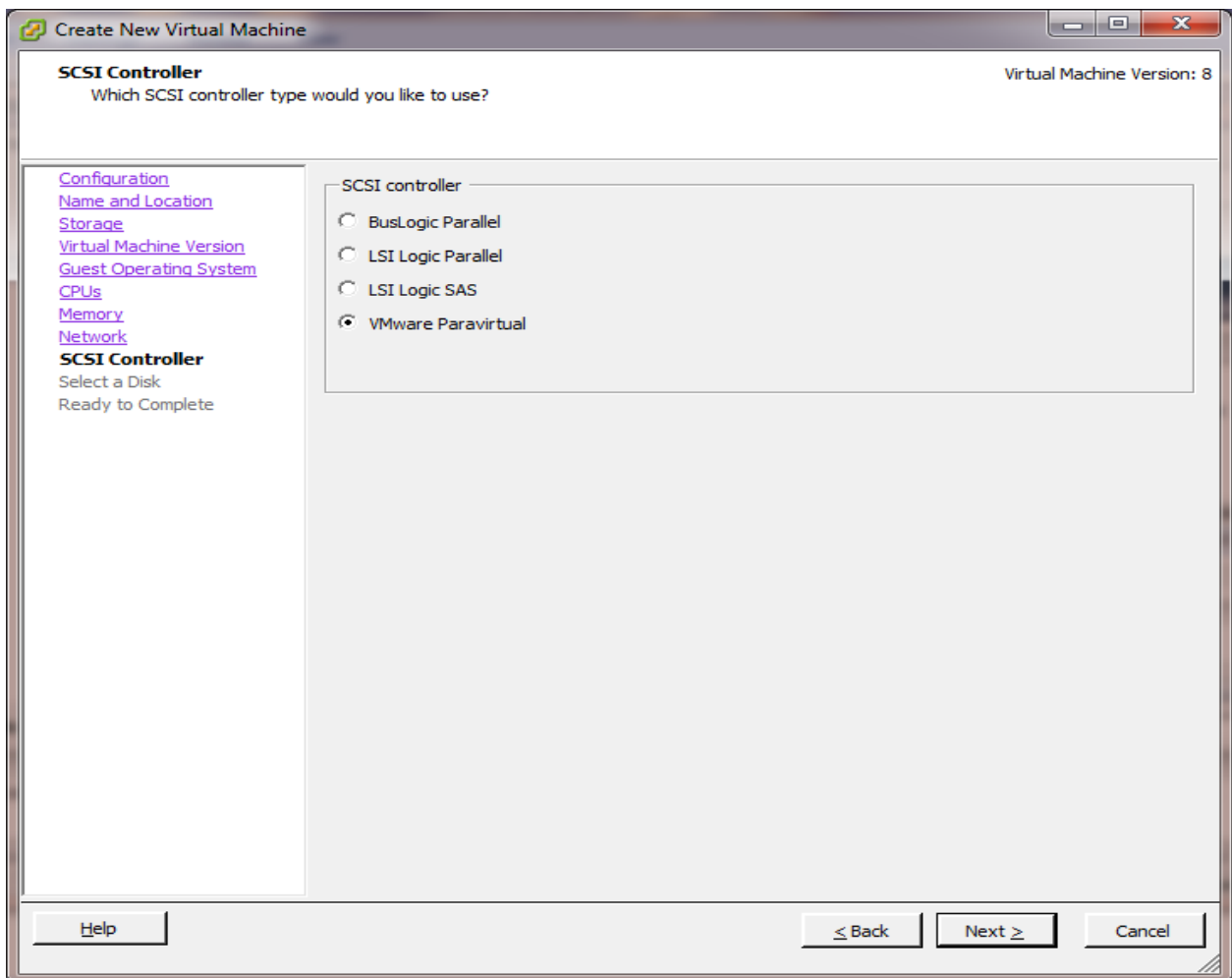


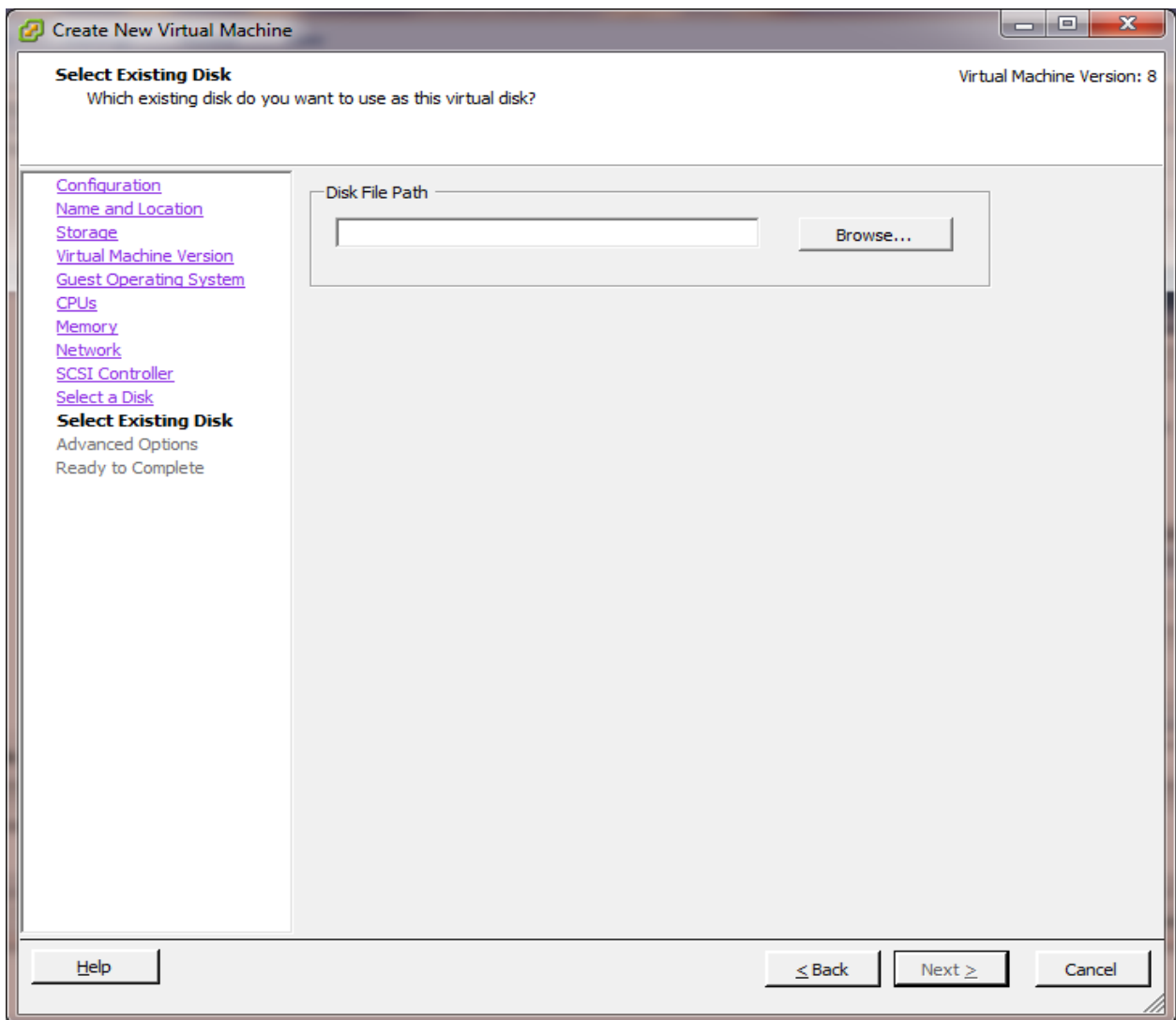




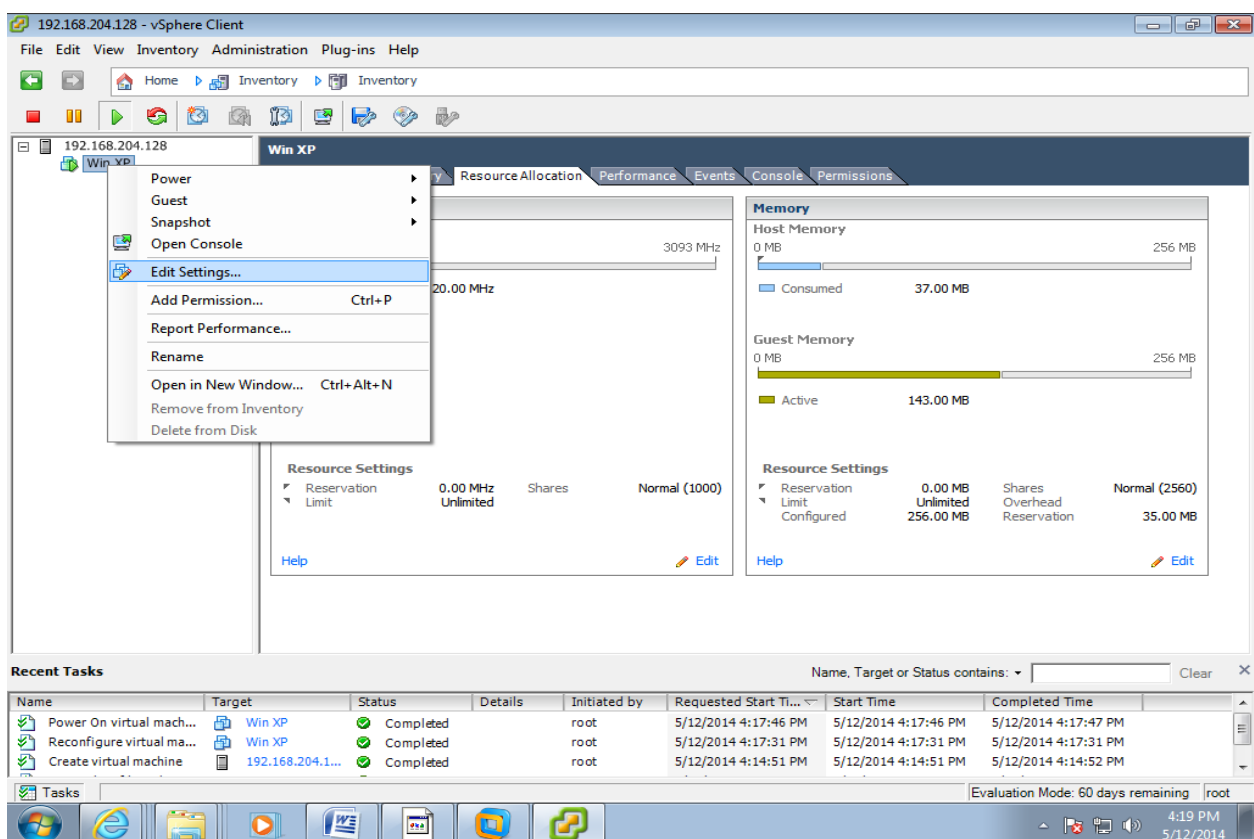








STEP 9: Click on Next and then Finish button.



192.168.204.128 - vSphere Client

File Edit View Inventory Administration Plug-ins Help

Home

Win XP - Virtual Machine Properties

Hardware Options Resources Virtual Machine Version: 8

Show All Devices Add... Remove

Hardware	Summary
Memory	256 MB
CPUs	1
Video card	Video card
VMCI device	Restricted
Hard disk 1	Virtual Disk
CD/DVD drive 1	[datastore1] WXPVOL_...
Network adapter 1	VM Network
Floppy drive 1	Client Device

Device Status

Connected

Connect at power on

Device Type

Client Device

Note: To connect this device, you must power on the virtual machine and then click the Connect CD/DVD button in the toolbar.

Host Device

Mode

Passthrough IDE (recommended)

Emulate IDE

Virtual Device Node

IDE (1:0) CD/DVD drive 1

256 MB

256 MB

Normal (2560)

35.00 MB

Edit

Recent Tasks

Name	Target	Status	Details	Initiated by	Requested Start Time	Start Time	Completed Time
Power On virtual mach...	Win XP	Completed		root	5/12/2014 4:14:51 PM	5/12/2014 4:14:51 PM	5/12/2014 4:14:52 PM

Tasks

4:19 PM 5/12/2014

192.168.204.128 - vSphere Client

File Edit View Inventory Administration Plug-ins Help

Home Inventory Inventory

Win XP

Getting Started Summary Resource Allocation Performance Events Console Permissions

close tab X

What is a Virtual Machine?

A virtual machine is a software computer that, like a physical computer, runs an operating system and applications. An operating system installed on a virtual machine is called a guest operating system.

Because every virtual machine is an isolated computing environment, you can use virtual machines as desktop or workstation environments, as testing environments, or to consolidate server applications.

Virtual machines run on hosts. The same host can run many virtual machines.

Basic Tasks

- Power on the virtual machine
- Edit virtual machine settings

Recent Tasks

Name, Target or Status contains: Clear X

Name	Target	Status	Details	Initiated by	Requested Start Time	Start Time	Completed Time
Power Off virtual mach...	Win XP	Completed		root	5/12/2014 4:20:29 PM	5/12/2014 4:20:29 PM	5/12/2014 4:20:30 PM
Reconfigure virtual ma...	Win XP	Completed		root	5/12/2014 4:19:58 PM	5/12/2014 4:19:58 PM	5/12/2014 4:19:58 PM
Power On virtual mach...	Win XP	Completed		root	5/12/2014 4:17:46 PM	5/12/2014 4:17:46 PM	5/12/2014 4:17:47 PM

Tasks

4:20 PM 5/12/2014

STEP 10: Power on virtual machine. Click on Console Tab.

The screenshot shows the vSphere Client interface for a virtual machine named 'Win XP'. The console tab is active, displaying the following boot sequence:

```
Network boot from AMD AM79C970A
Copyright (C) 2003-2008 VMware, Inc.
Copyright (C) 1997-2000 Intel Corporation

CLIENT MAC ADDR: 00 0C 29 B2 82 9E  GUID: 564DFF89-29DB-FB4D-8320-DDD7CAB2829E
PXE-E53: No boot filename received

PXE-M0F: Exiting Intel PXE ROM.
-
```

Below the console, the 'Recent Tasks' table is visible:

Name	Target	Status	Details	Initiated by	Requested Start Time	Start Time	Completed Time
Power On virtual mach...	Win XP	Completed		root	5/12/2014 4:17:46 PM	5/12/2014 4:17:46 PM	5/12/2014 4:17:47 PM
Reconfigure virtual ma...	Win XP	Completed		root	5/12/2014 4:17:31 PM	5/12/2014 4:17:31 PM	5/12/2014 4:17:31 PM
Create virtual machine	192.168.204.1...	Completed		root	5/12/2014 4:14:51 PM	5/12/2014 4:14:51 PM	5/12/2014 4:14:52 PM

The bottom of the screenshot shows the Windows XP desktop environment with the Start menu open.

The screenshot shows the 'Windows XP Professional Setup' screen. The text on the screen is as follows:

Windows XP Professional Setup

Welcome to Setup.

This portion of the Setup program prepares Microsoft(R) Windows(R) XP to run on your computer.

- To set up Windows XP now, press ENTER.
- To repair a Windows XP installation using Recovery Console, press R.
- To quit Setup without installing Windows XP, press F3.

ENTER=Continue R=Repair F3=Quit

STEP 11: Press ENTER.

Windows XP Licensing Agreement

Microsoft Windows XP Professional

END-USER LICENSE AGREEMENT

IMPORTANT-READ CAREFULLY: This End-User License Agreement ("EULA") is a legal agreement between you (either an individual or a single entity) and Microsoft Corporation for the Microsoft software product identified above, which includes computer software and may include associated media, printed materials, "online" or electronic documentation, and Internet-based services ("Product"). An amendment or addendum to this EULA may accompany the Product. YOU AGREE TO BE BOUND BY THE TERMS OF THIS EULA BY INSTALLING, COPYING, OR OTHERWISE USING THE PRODUCT. IF YOU DO NOT AGREE, DO NOT INSTALL OR USE THE PRODUCT; YOU MAY RETURN IT TO YOUR PLACE OF PURCHASE FOR A FULL REFUND.

1. GRANT OF LICENSE. Microsoft grants you the following rights provided that you comply with all terms and conditions of this EULA:

- * Installation and use. You may install, use, access, display and run one copy of the Product on a single computer, such as a workstation, terminal or other device ("Workstation Computer"). The Product may not be used by more than two (2) processors at any one time on any

F8=I agree ESC=I do not agree PAGE DOWN=Next Page

STEP 12: Press F8.

Windows XP Professional Setup

The following list shows the existing partitions and unpartitioned space on this computer.

Use the UP and DOWN ARROW keys to select an item in the list.

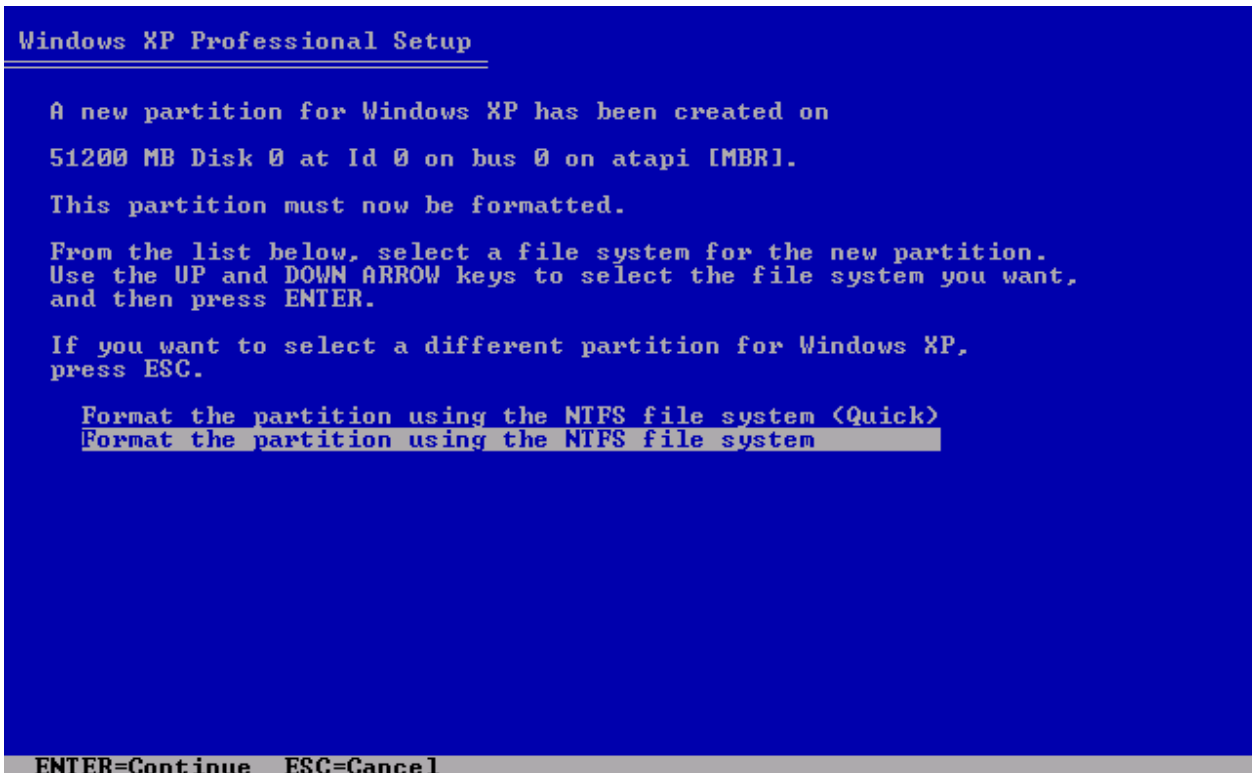
- To set up Windows XP on the selected item, press ENTER.
- To create a partition in the unpartitioned space, press C.
- To delete the selected partition, press D.

51200 MB Disk 0 at Id 0 on bus 0 on atapi [MBR]

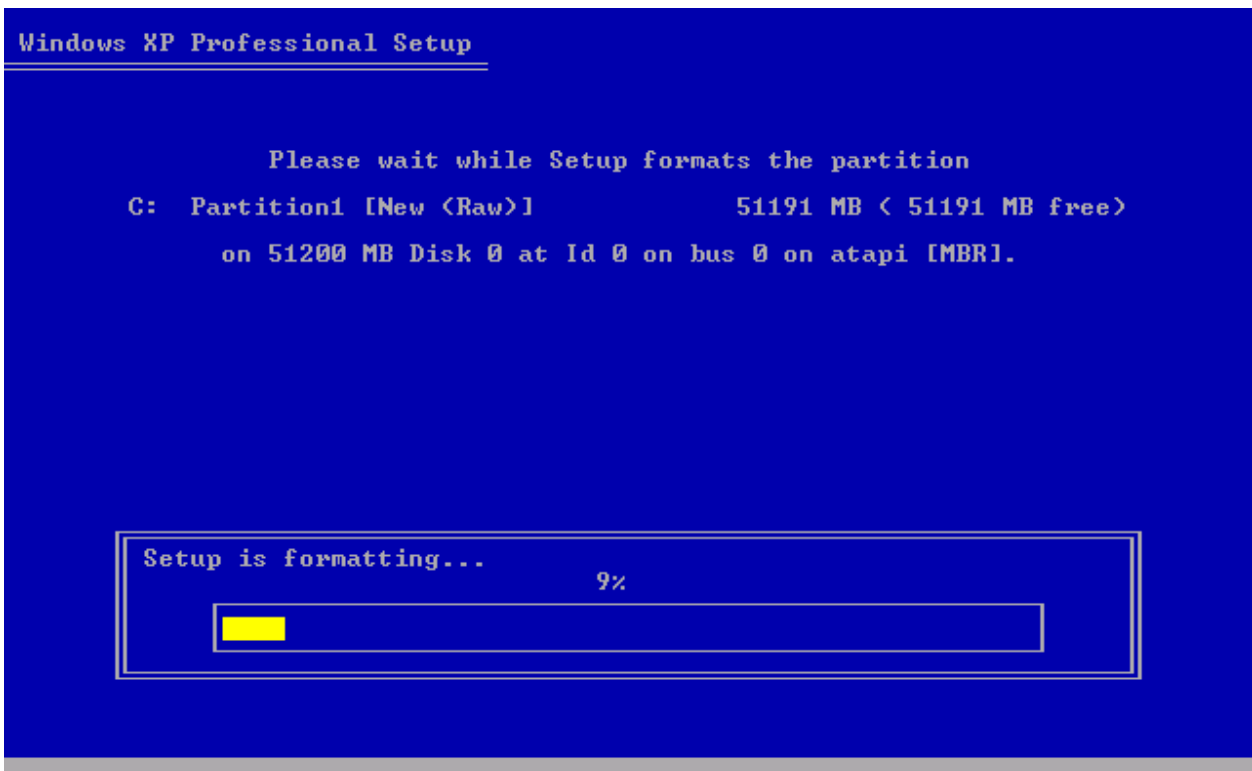
Unpartitioned space 51199 MB

ENTER=Install C=Create Partition F3=Quit

STEP 13: Press ENTER key.



STEP 14: Press ENTER for formatting the partition.



Windows XP Professional Setup

This portion of Setup has completed successfully.
If there is a floppy disk in drive A:, remove it.
To restart your computer, press ENTER.
When your computer restarts, Setup will continue.

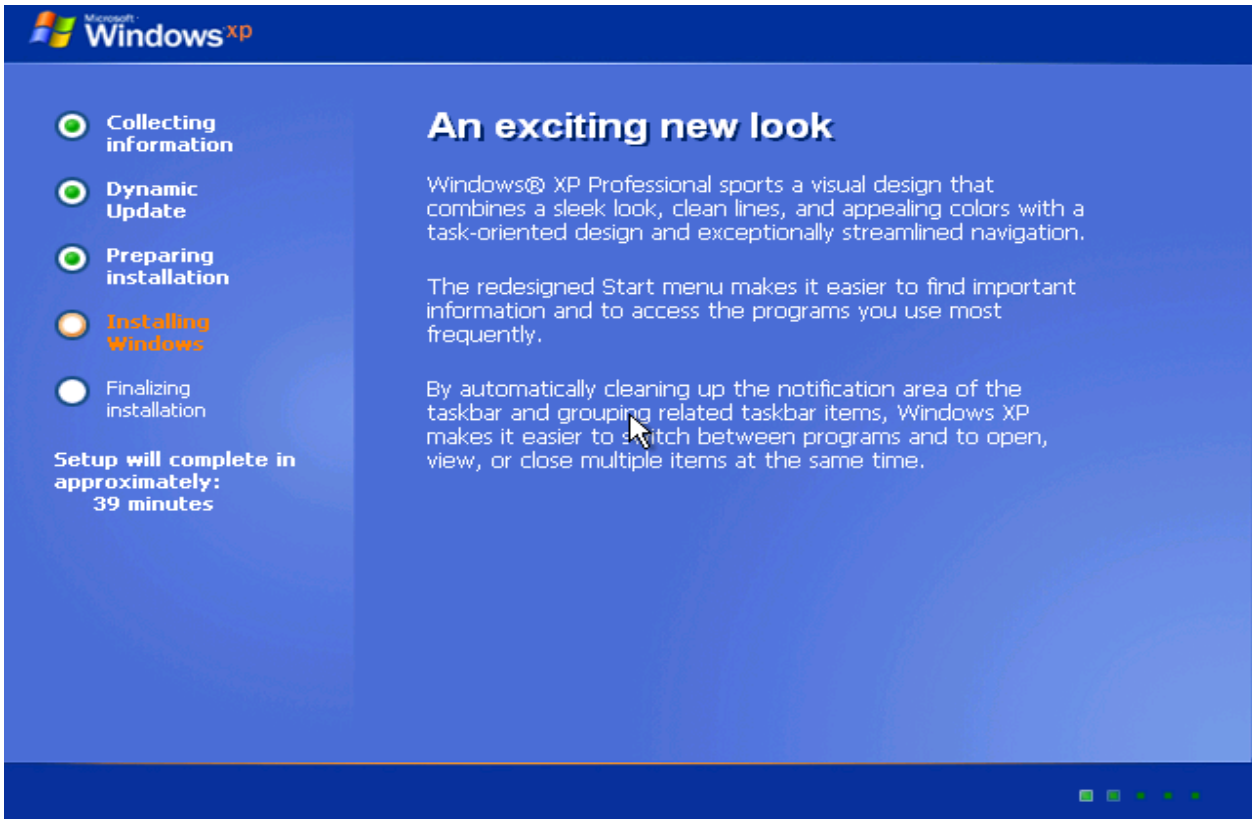
Your computer will reboot in 11 seconds...



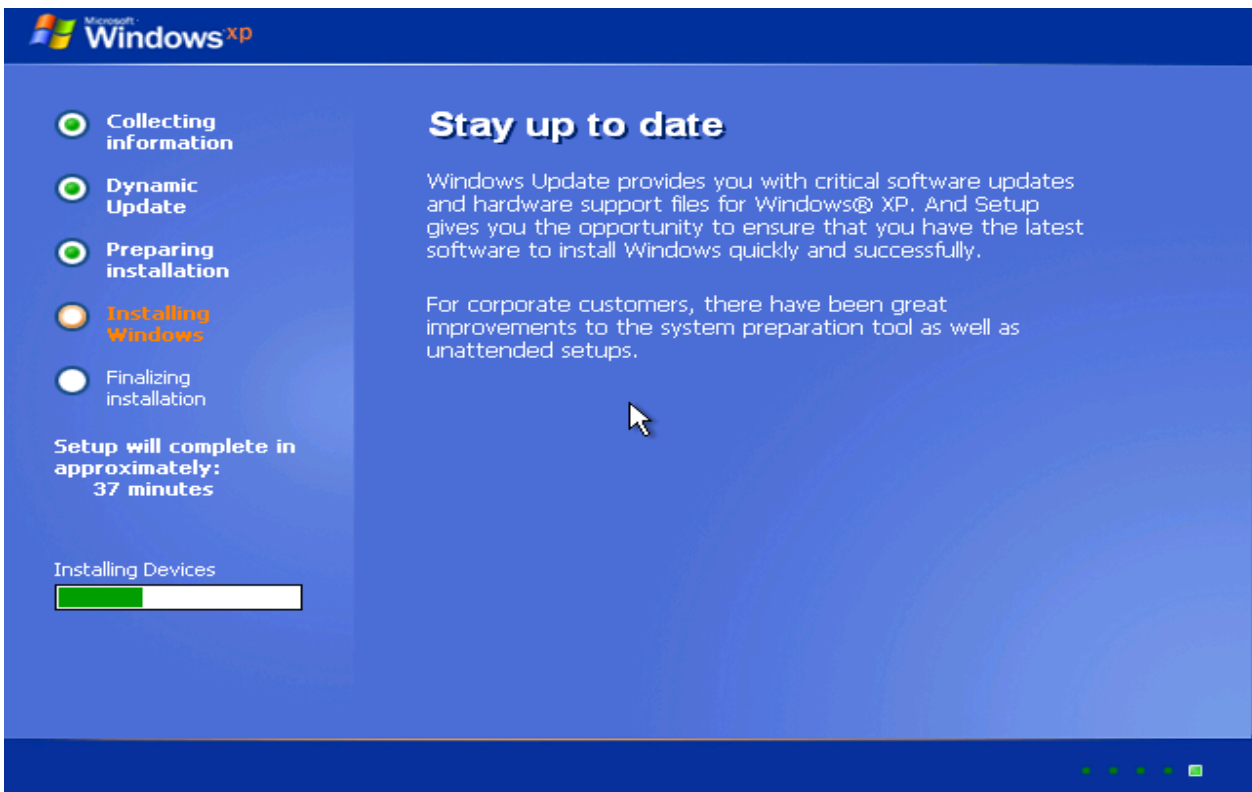
ENTER=Restart Computer

STEP 15: Press any key.

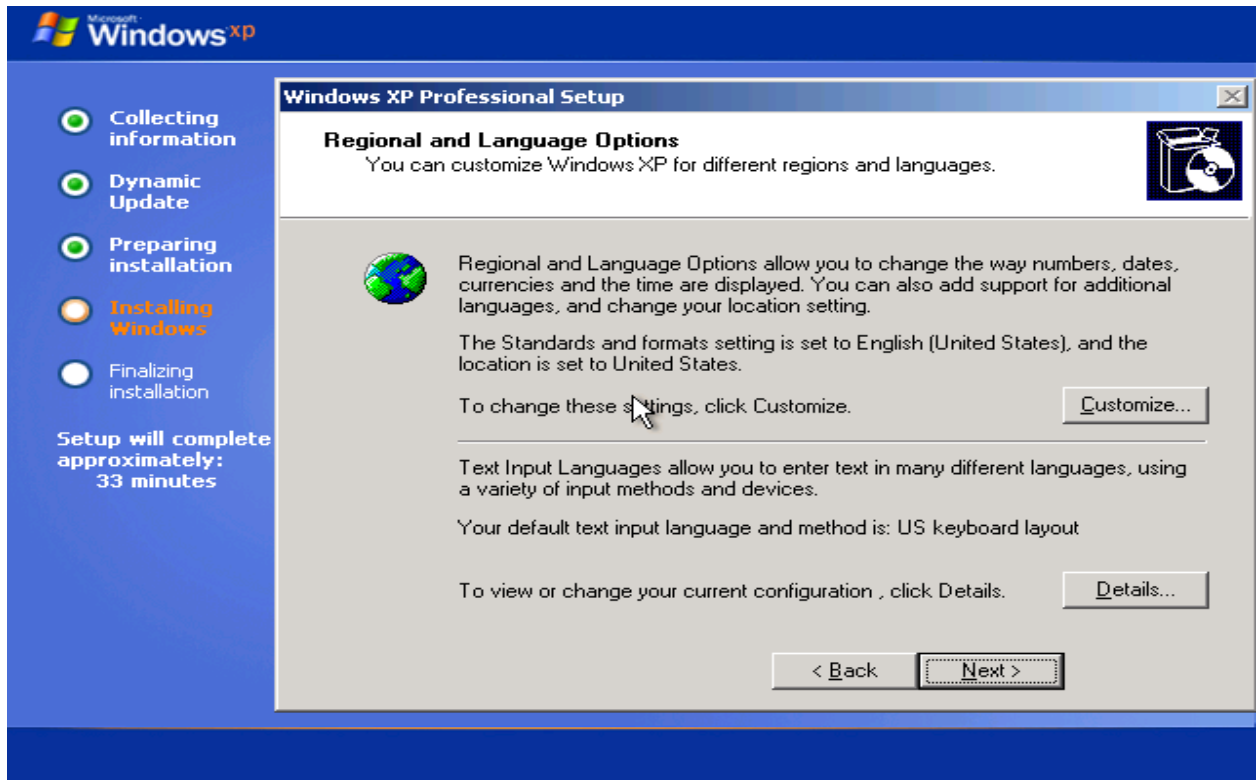




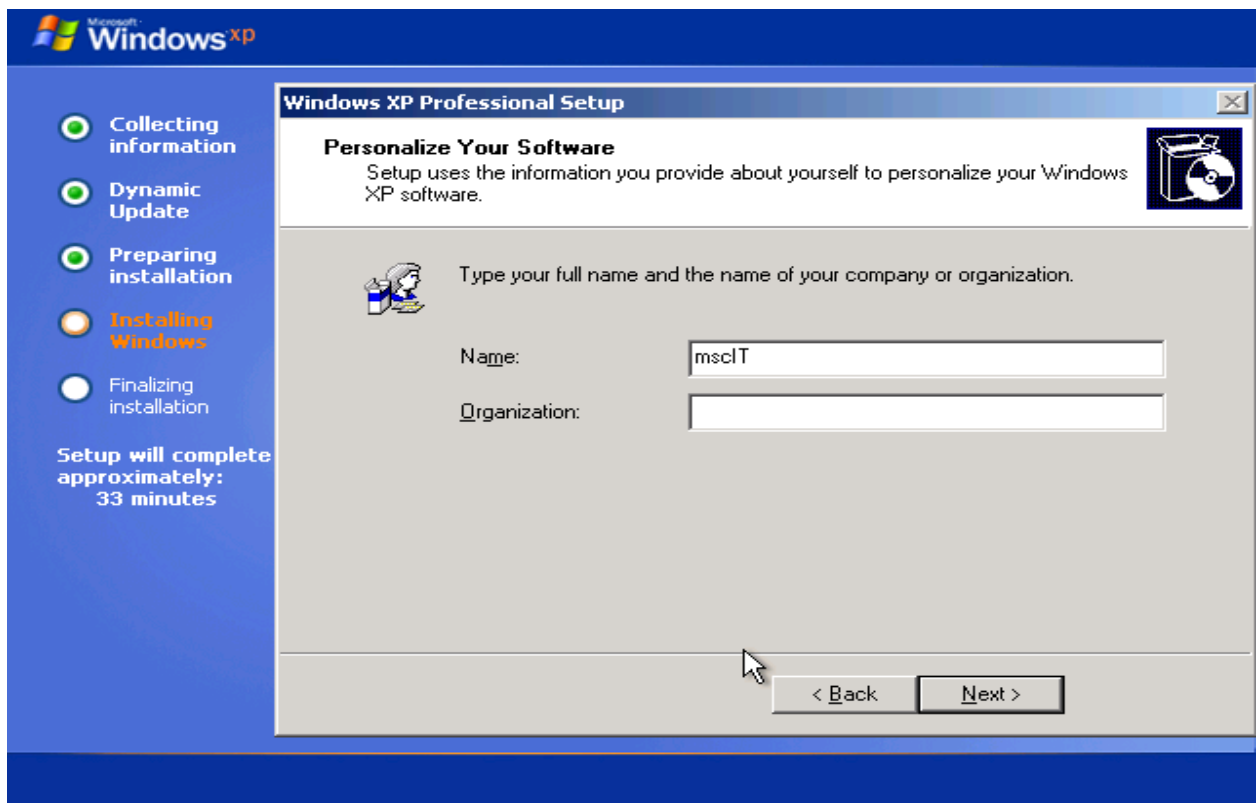
STEP 16: Installing Devices.



STEP 17: Click Next.



STEP 18: Type the Name and Click Next.

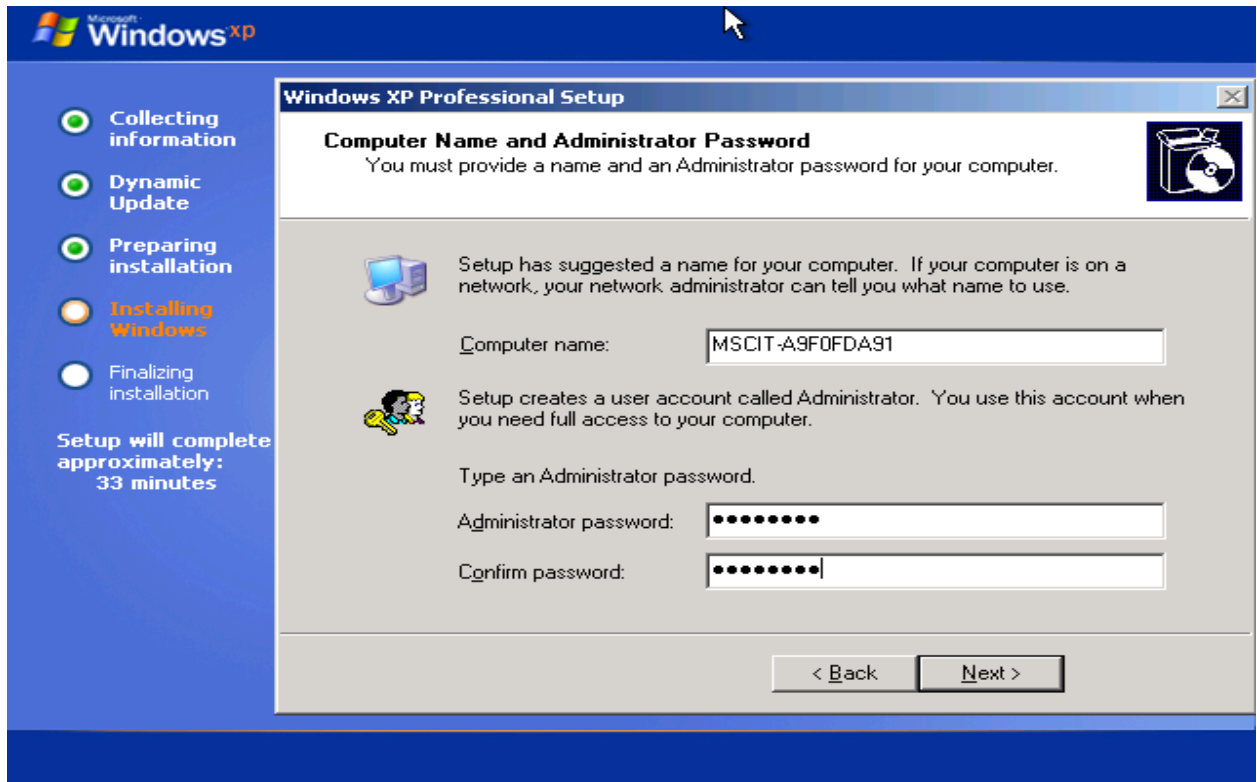




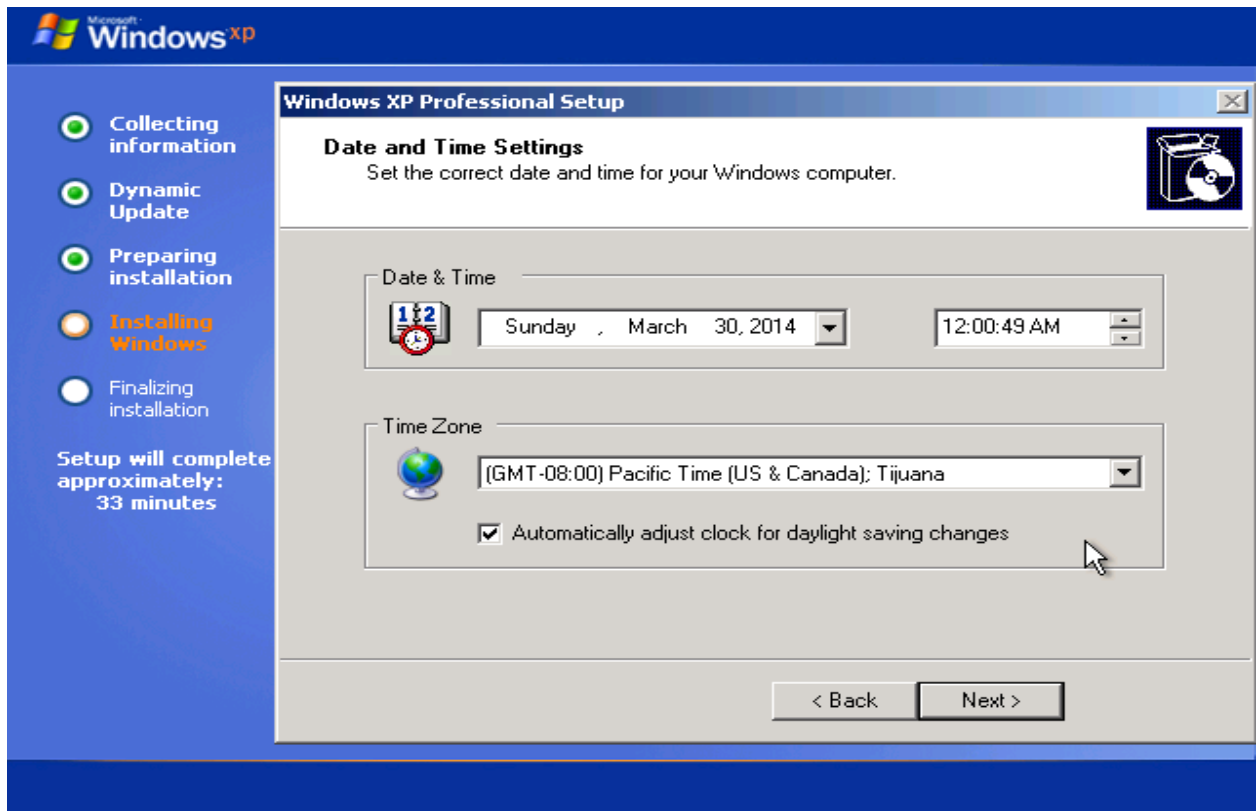
STEP 19: Enter product key.



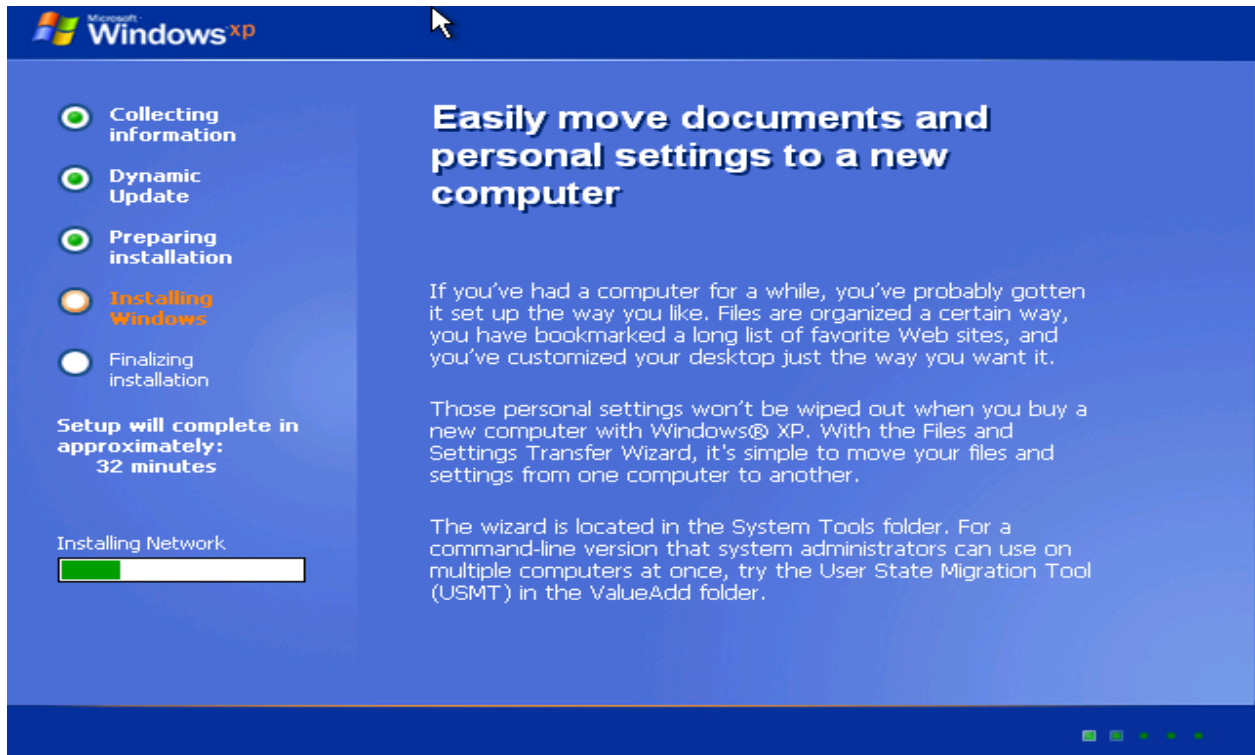
STEP 20: Click next and type password.



STEP 21: Click Next.



STEP 22: After Click on Next.



STEP 23: Press any Key.

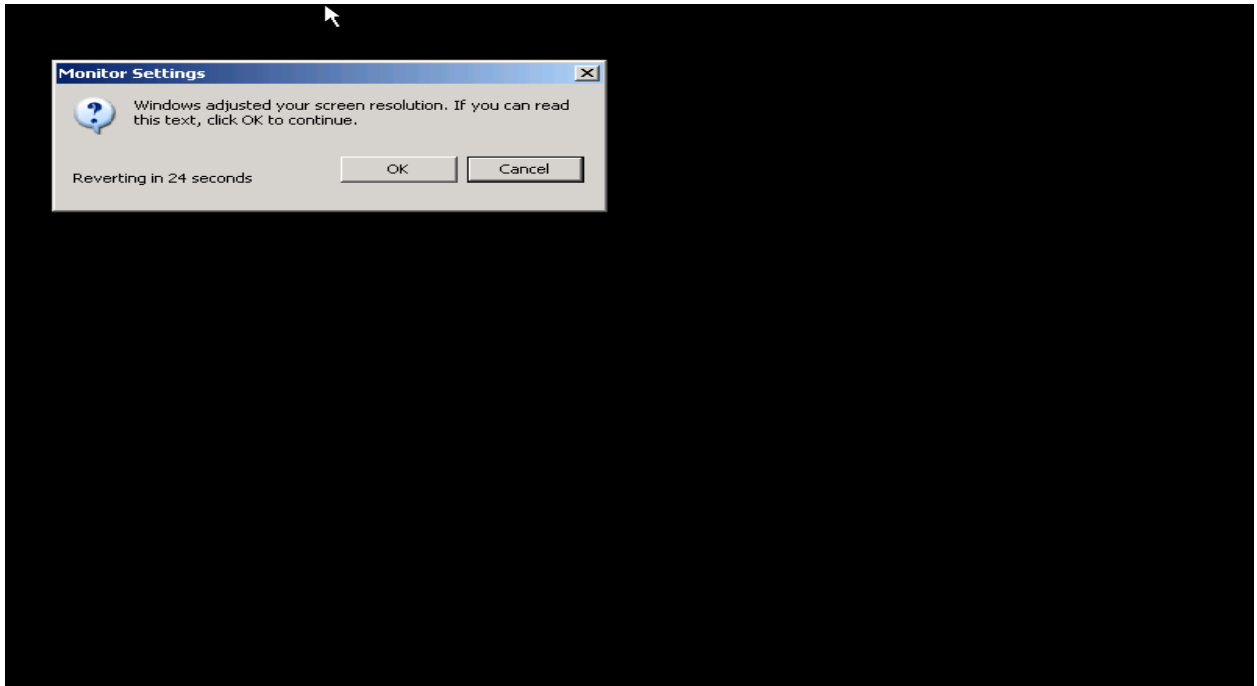




STEP 24: Click OK.



STEP 25: Click OK.



STEP 26: Click NEXT Button.





STEP 27: Click Next.

Microsoft
Windows^{XP}

Help protect your PC

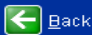

With Automatic Updates, Windows can routinely check for the latest important updates for your computer and install them automatically. These updates can include security updates, critical updates, and service packs.

 **Help protect my PC by turning on Automatic Updates now**
(recommended)

 **Not right now**
If you haven't turned on Automatic Updates, your computer is more vulnerable to viruses and other security threats.

No information is collected that can be used to identify you or contact you.
Please read the [Windows Update privacy statement](#).

For help, click here or press F1.

 Back Next 

STEP 28: Type Your Name and click Next.

Microsoft
Windows^{XP}

Who will use this computer?

Type the name of each person who will use this computer. Windows will create a separate user account for each person so you can personalize the way you want Windows to organize and display information, protect your files and computer settings, and customize the desktop.

Your name:

2nd User:



3rd User:

4th User:

5th User:

These names will appear on the Welcome screen in alphabetical order. When you start Windows, simply click your name on the Welcome screen to begin. If you want to set passwords and limit permissions for each user, or add more user accounts after you finish setting up Windows, just click **Control Panel** on the **Start** menu, and then click **User Accounts**.

For help, click here or press F1.

 Back Next 

STEP 29: Click FINISH.

